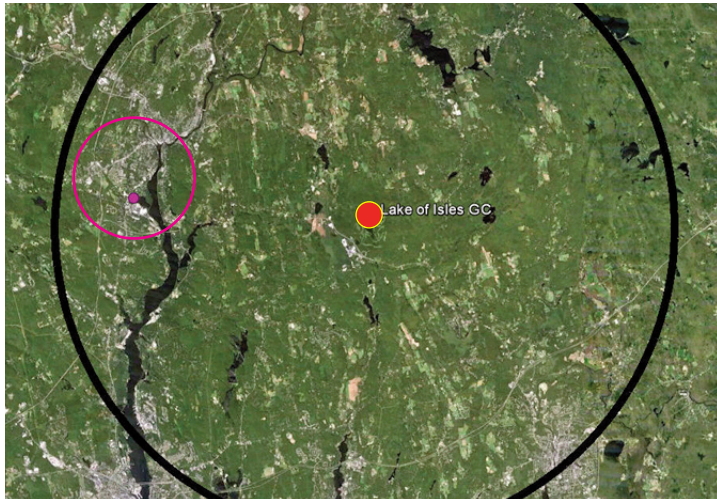


WeatherBug Safety Solutions In Action

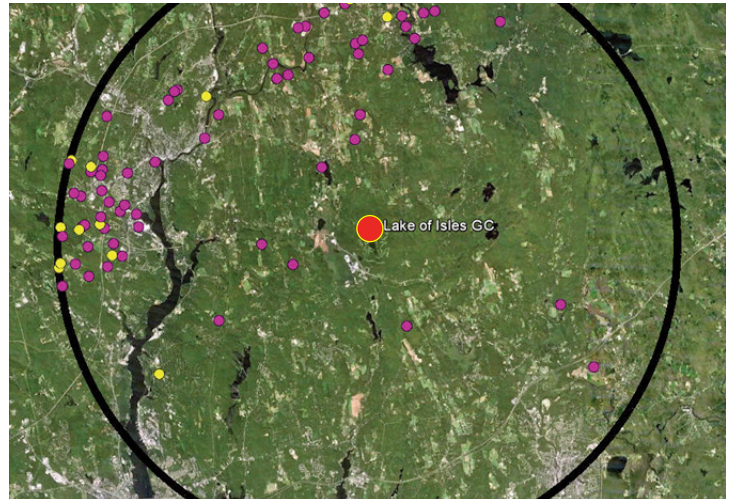
WHAT: 15 workers injured by lightning when seeking shelter in a shed on the course

WHERE: Lake of the Isles Golf Course, North Stonington, CT

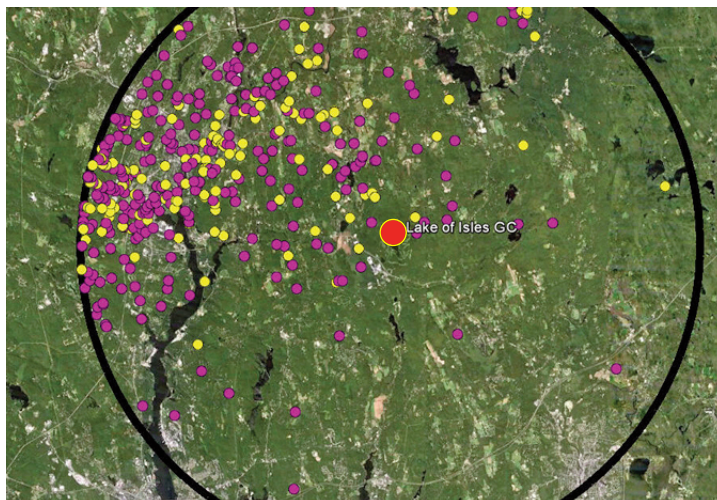
WHEN: Monday, June 25, 2012



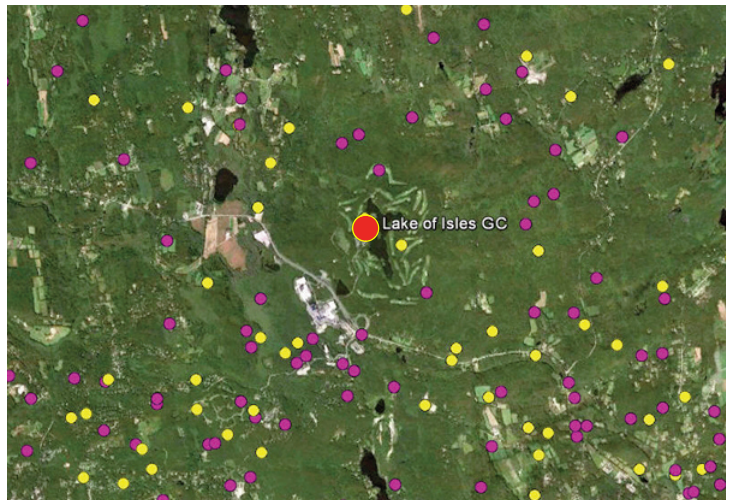
7:59 AM – An in-cloud lightning pulse occurred 7.55 miles west of golf course – within dangerous range.



8:00 - 8:30 AM – Several in-cloud lightning pulses and cloud-to-ground strokes enter the 10 mile range.



9:00 - 9:15 AM – Many in-cloud and cloud-to-ground strikes within 2 miles of the golf course.



9:21 AM – In-cloud pulses and cloud-to-ground strikes encompass the golf course. Cloud-to-ground lightning strikes injures workers and impacts operations.

WeatherBug offered clients in the area 81 minutes advanced warning.

This Event Demonstrates How Advanced Warning Can Help Save Lives

This event demonstrates the tremendous value of a TOTAL LIGHTNING. Total lightning data is critical and WeatherBug is the only provider that can detect TOTAL LIGHTNING to this level.

WeatherBug equips clubs and management with a turnkey solution that constantly monitors dangerous weather conditions and issues customized alerts in real time. WeatherBug provides on-site detection and advanced alerts for lightning and severe weather to multiple locations via multiple methods — mobile devices, computers, indoor alerting devices or to an outdoor alerting system.