

# WeatherBug Safety Solutions In Action



**WHAT:** Lightning strike burns 23 children at Boy Scouts camp.

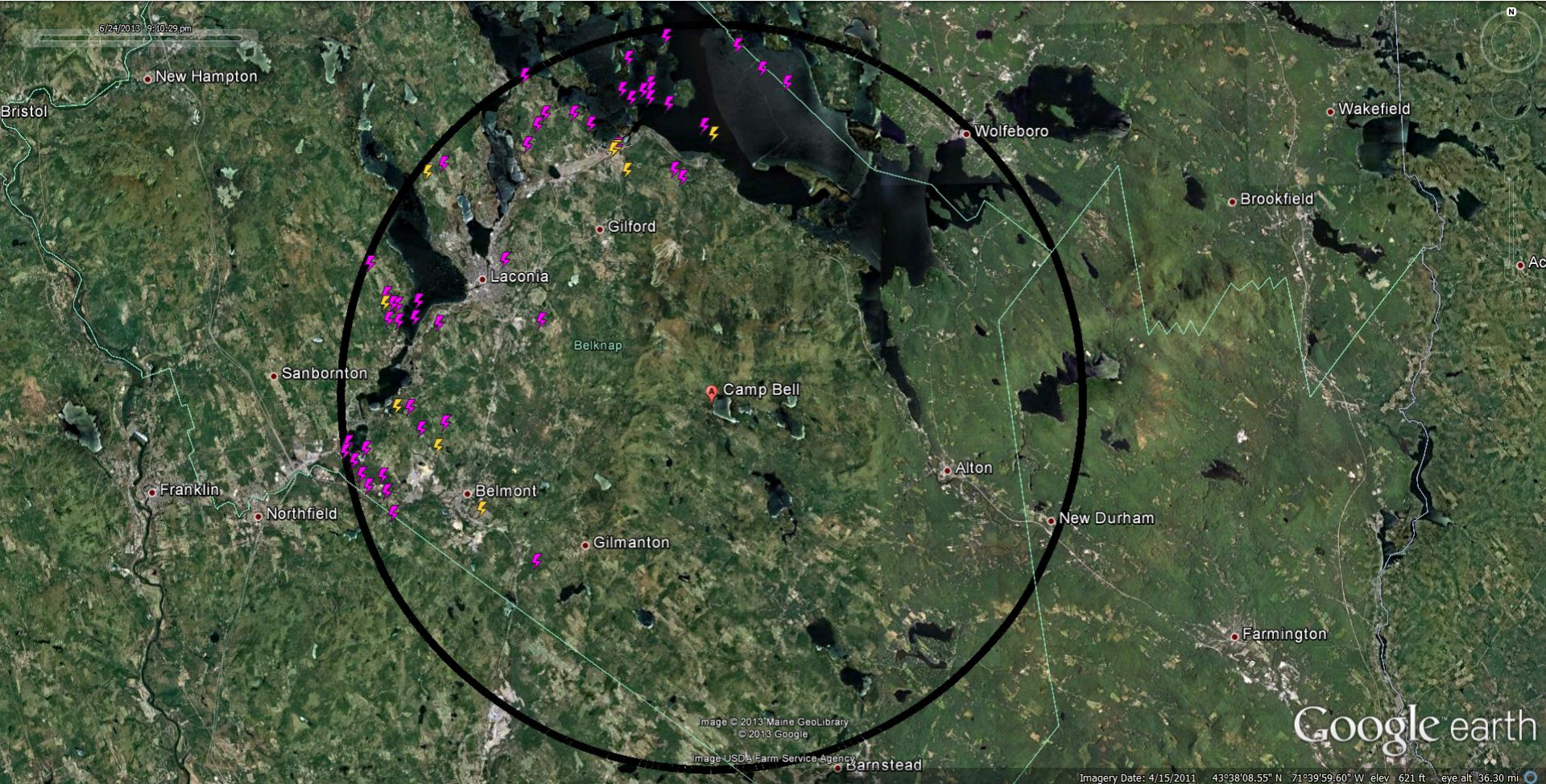
**WHERE:** Camp Bell, Gilmanton, NH

**WHEN:** Monday, June 24<sup>th</sup> 2013

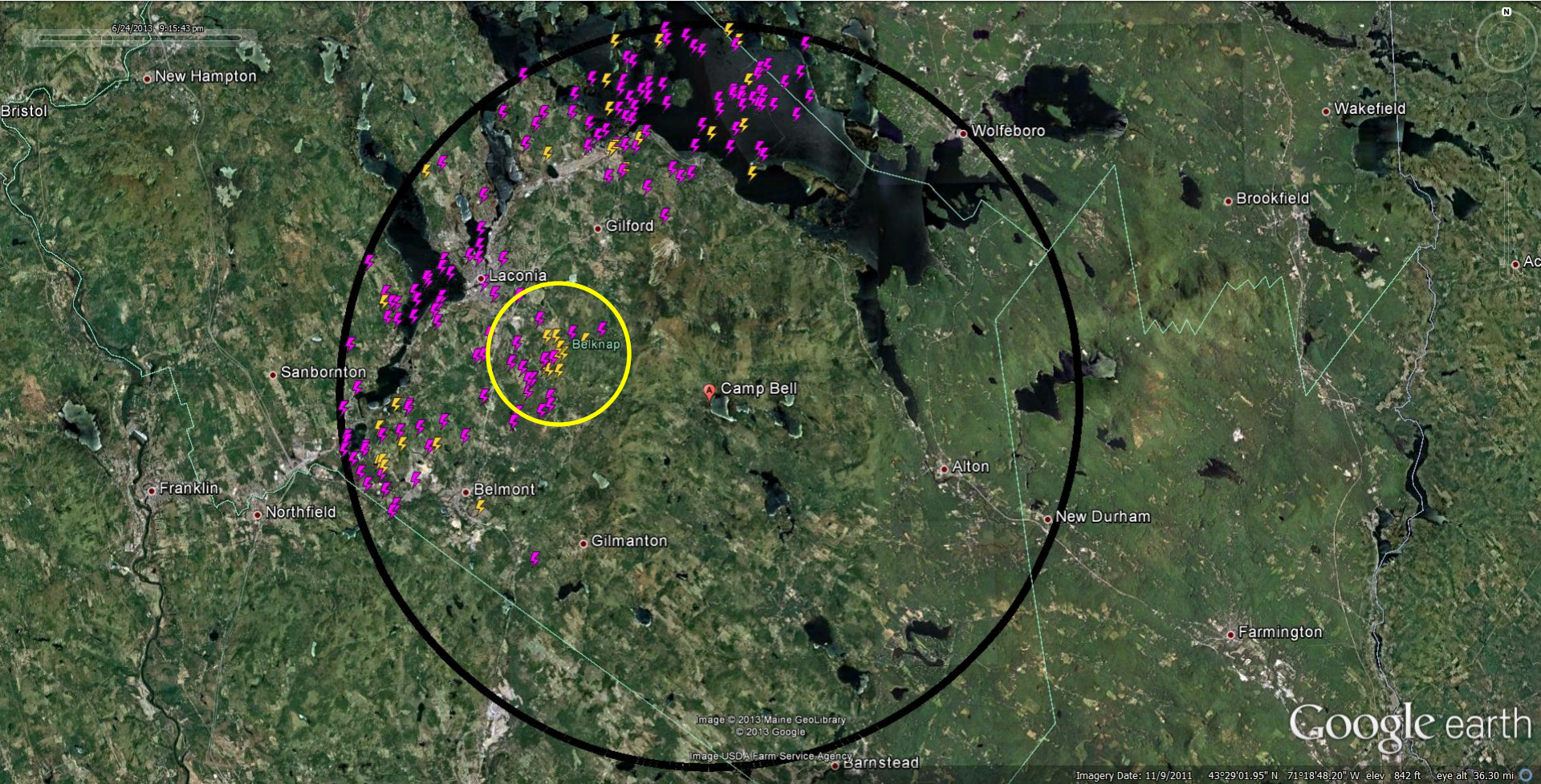
6:49 PM-First in-cloud lightning strike (magenta) is detected within 10 Miles of Camp Bell – 39 minutes prior to injuries.



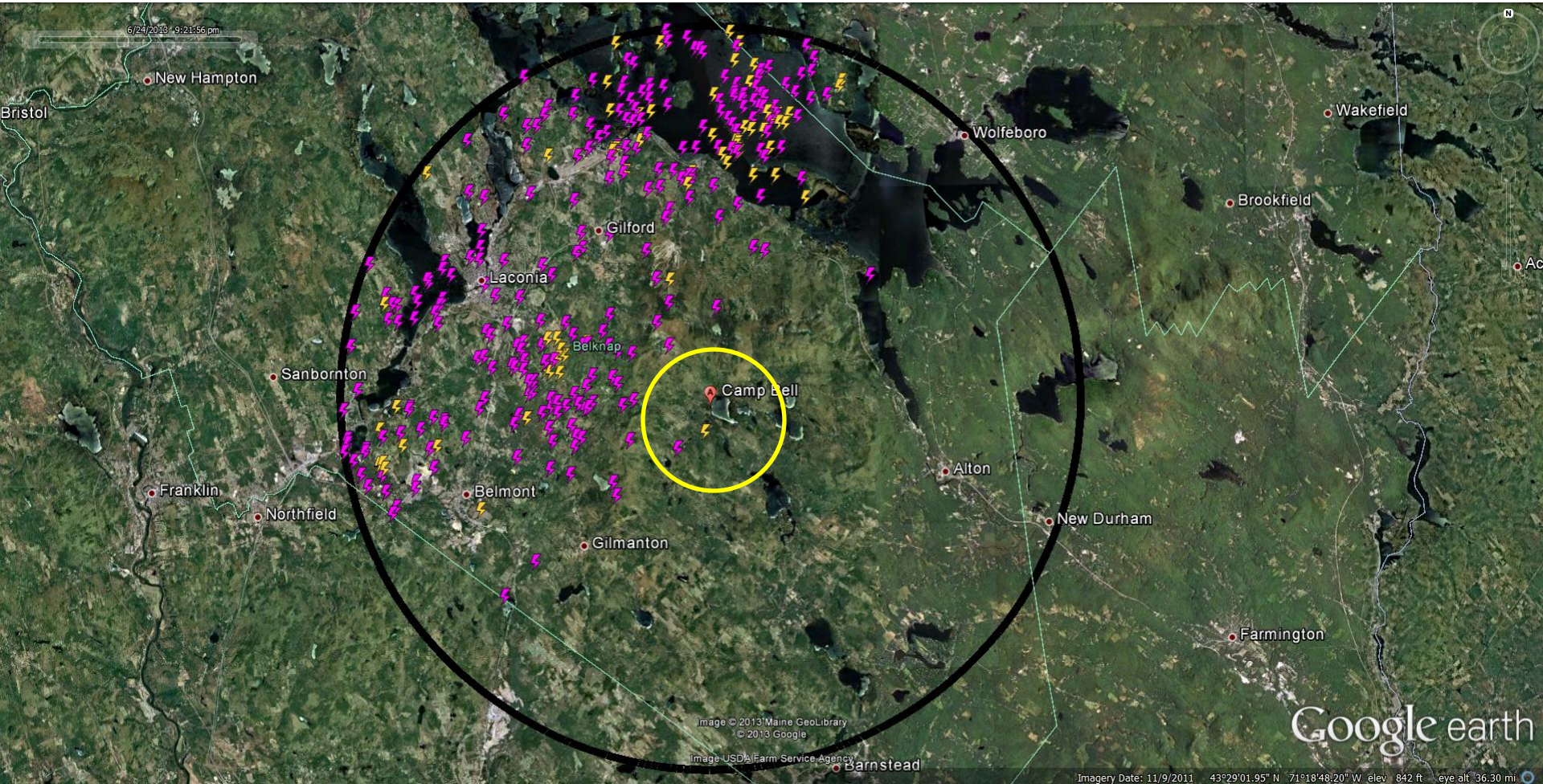
7:10 PM- Cloud-to-ground lightning strikes (yellow) and in-cloud lightning continue in the direction of Camp Bell.



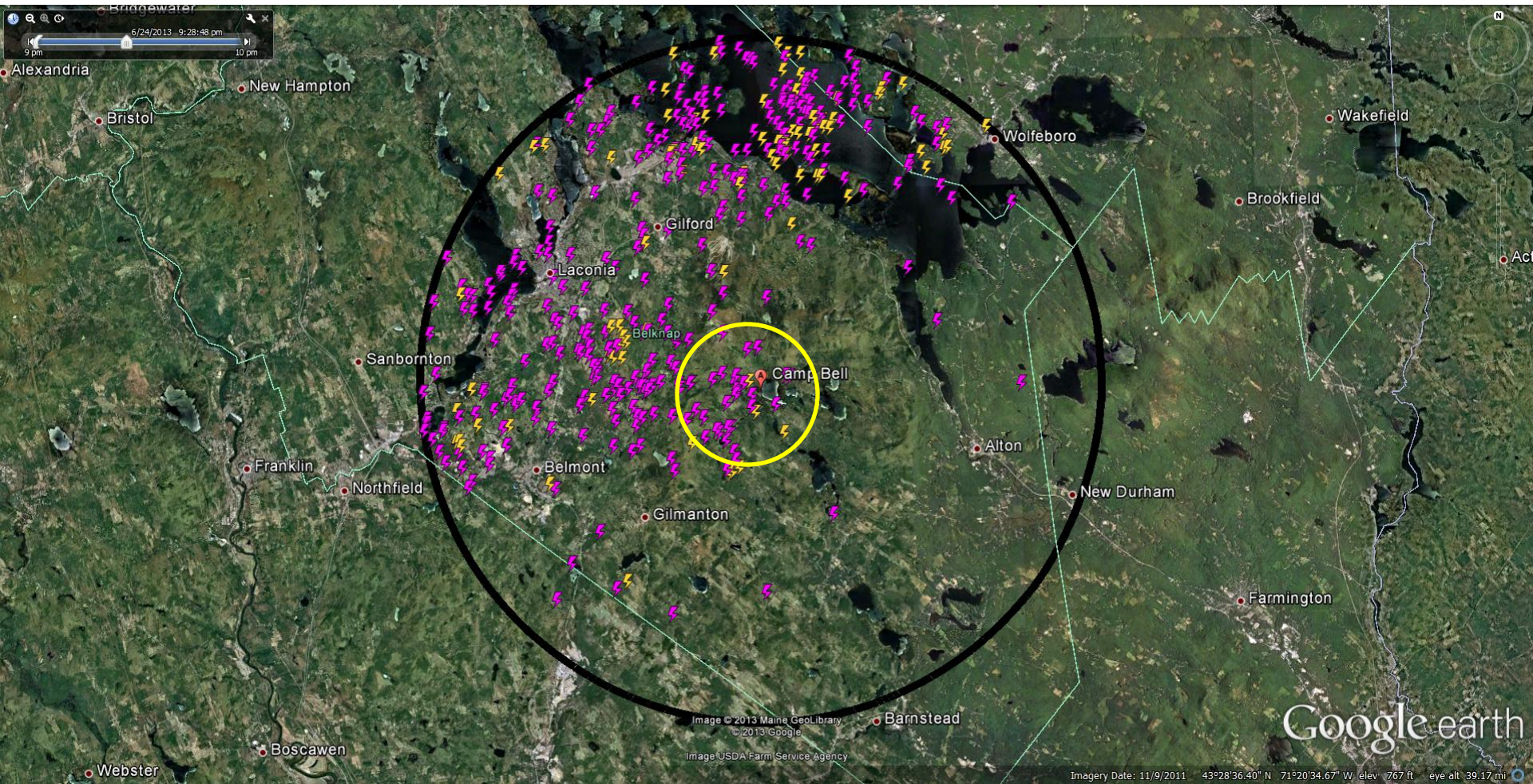
7:15 PM- Cloud-to-ground lightning strikes intensify and continue towards camp – now within 4 miles.



7:21 PM - Cloud-to-ground lightning is detected less than a mile away from the camp – 7 minutes prior to injuries.



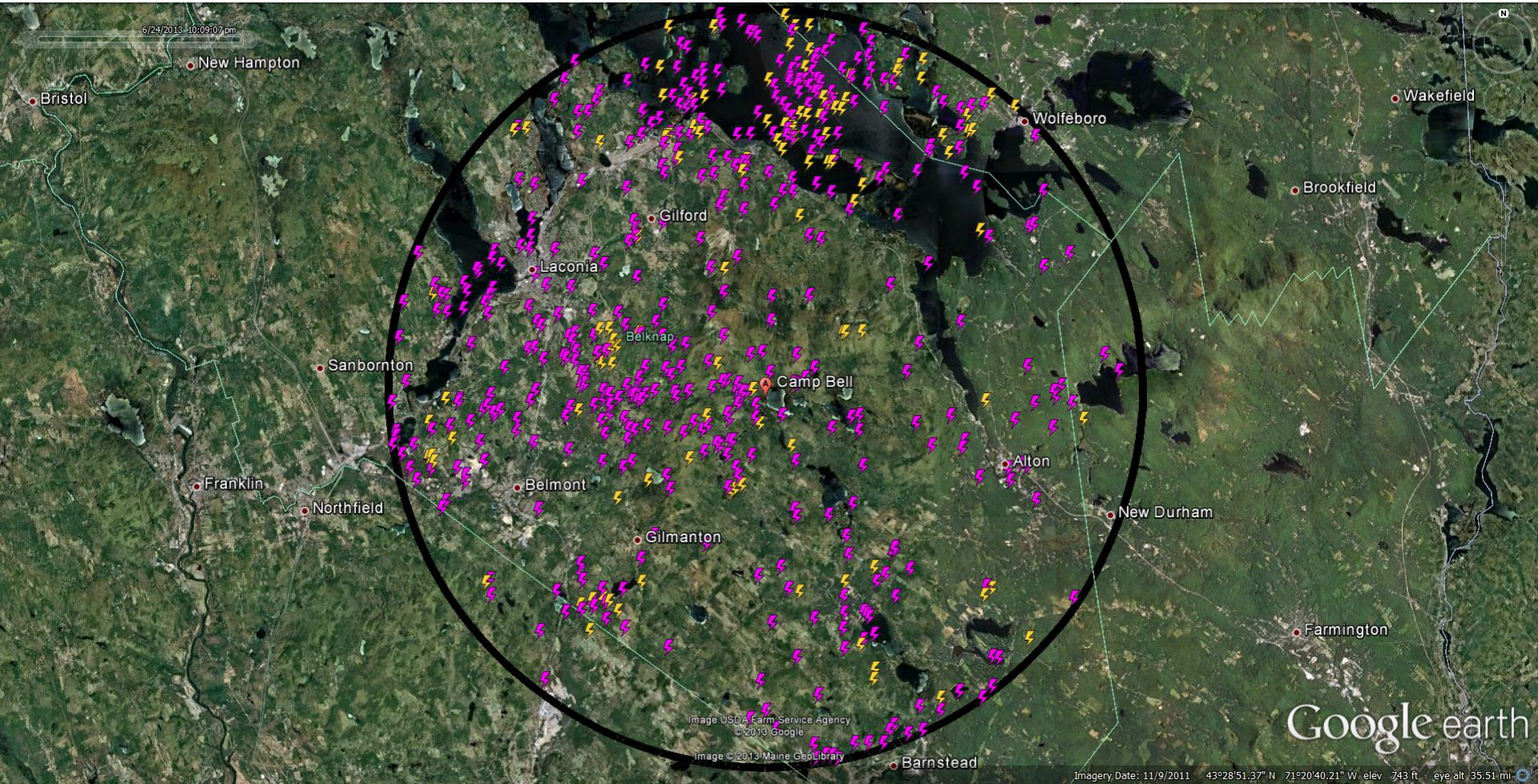
7:28:42 PM – A cloud-to-ground strike 500-600 yards from the camp; likely cause of injuries to 23 scouts.



7:28:42 PM – A cloud-to-ground strike 500-600 yards from the camp; likely cause of injuries to 23 scouts.



## Total Lightning Throughout Event



There were no NWS alerts associated with this event.





## This Event Demonstrates How Advanced Warning Can Help Save Lives



know before.<sup>SM</sup>

This event validates the tremendous value of TOTAL LIGHTNING. Total lightning data is critical and WeatherBug is the only provider that can detect TOTAL LIGHTNING at this level of precision.

WeatherBug equips management and personnel with a turnkey solution that constantly monitors dangerous weather conditions and issues customized alerts in real time. WeatherBug provides on-site detection and advanced alerts for lightning and severe weather to multiple locations via multiple methods—mobile devices, computers, indoor alerting devices and to outdoor alerting systems.