

## Club Safety Overview

Comprehensive severe weather intelligence for member safety, member services, special event operations and irrigation & turf management.



### Member Safety

#### Keep Them Safe



- Make accurate, weather-related decisions to safeguard members, guests, vendors and employees.
- Get the most accurate lightning alerts, when and where you need them.

- Make informed athletic and outdoor activity assessments.
- Receive and disseminate severe weather alerts immediately.
- Increase safety and property management.

### Direct Member Benefits

#### Leverage Your Weather



- Be **the reliable** live weather resource for your members and community.
- Members can plan activities by visiting your website which has live weather and forecast information from your grounds.

- Create positive public awareness.
- Promote your club with television and Internet exposure.

### Event Management

#### Meteorological Support



- 24/7 weather monitoring for safety, event planning and grounds maintenance.
- Manage risk in the face of inclement weather and uncertainty.
- Around-the-clock access to the same team of meteorologists who support government agencies, recreational parks and professional sporting events and leagues.



### Irrigation & Turf

#### Precision Data



- State-of-the-art instruments provide highly accurate on-site precipitation data.
- Reduce costs and optimize water management systems.
- Plan for optimal effectiveness for seeding, fertilizing and sodding.
- Accurately report weather conditions that determine golf cart usage on the course.

# WeatherBug Club Safety

WeatherBug® Club Safety is comprehensive severe weather intelligence for member safety, member services, special event operations, and irrigation & turf management.

The **WeatherBug Weather Station** is a commercial-grade weather station built to withstand all weather conditions. It is easily installed on club grounds, where it records 27 different weather measurements and disseminates them in real time—not once each hour, as other weather services do. The WeatherBug Weather Station integrates with the following solutions to provide a comprehensive program for weather-related activities and decision making.



## WeatherBug Total Lightning

Help Keep Your Members Safe with the Most Advanced Lightning Detection and Warning System Available



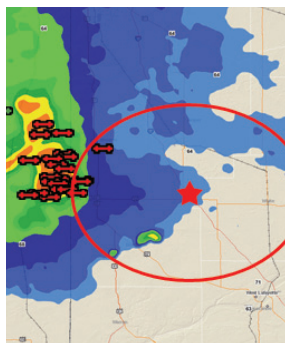
The WeatherBug Total Lightning is the standard in reliability for in-cloud (IC) and cloud-to-ground (CG) lightning detection – well beyond existing networks and single-node “prediction” systems.

### Early Warning Can Make the Difference

Detection of IC is critical for advanced warning of severe weather and deadly CG lightning strikes that often follow 5 to 30 minutes after IC flashes begin. Advanced warning increases your time to get people to a safe location and property secured.

### Alerts Where and When You Need Them

Receive alerts to multiple locations via multiple methods – mobile devices, computers, StreamerRT and to high-decibel outdoor horns. Avoid false alarms – strikes are monitored, confirmed and communicated.



## StreamerRT

Receive live, point-specific weather information to improve club operations, safety and response. This web-based weather intelligence platform brings the highest level of precision to the tracking and analysis of weather, for better preparation and response.



## Live Cameras

WeatherBug HD Cams provide great content for your website, and displays. A camera offers an excellent opportunity to showcase your club and really helps bring weather to life for your members.

showcase your club and really helps bring weather to life for your members.



## LCD Weather Display

Display the latest live, local current conditions, forecast, animated radar and camera images from your club to your members.



## Online Weather Center

Show off your live weather and provide detailed local forecasts on your club website. This Web-based tool includes navigable maps, radar and satellite data.



## Meteorological Support Services

Use the same expert team that supports professional football and baseball teams for consultation on weather forecasts and approaching severe weather. Customized

analysis and interpretation of the weather for your location are key in supporting major events and activities.