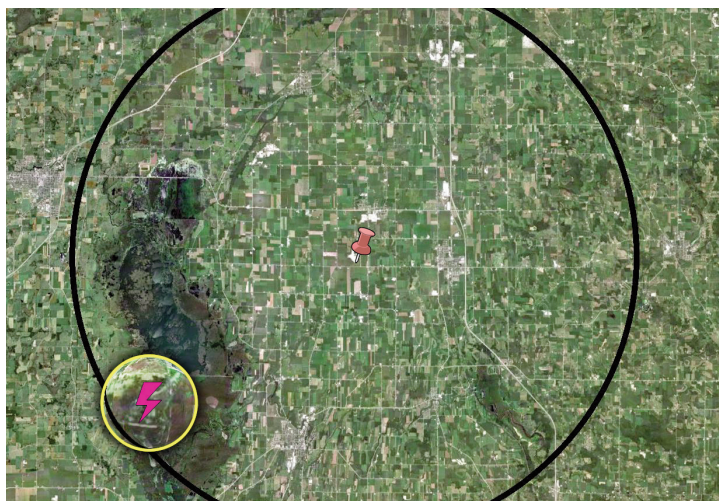


## WeatherBug Safety Solutions In Action

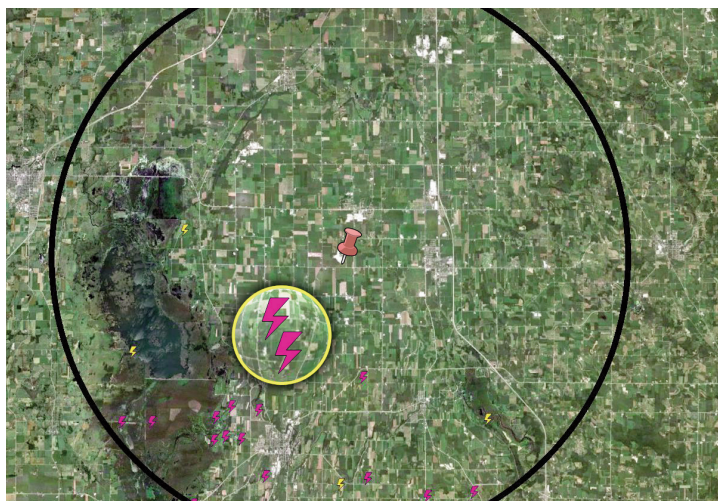
**WHAT:** Two men were struck by lightning working at a quarry.

**WHERE:** Brownsville, WI

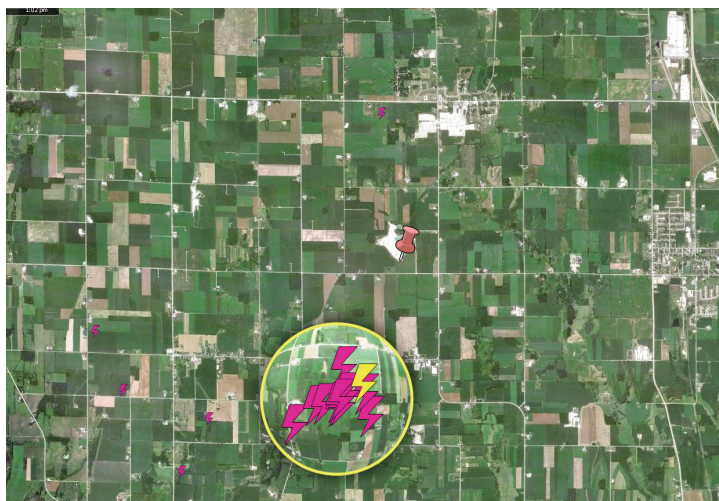
**WHEN:** Tuesday, April 9, 2012



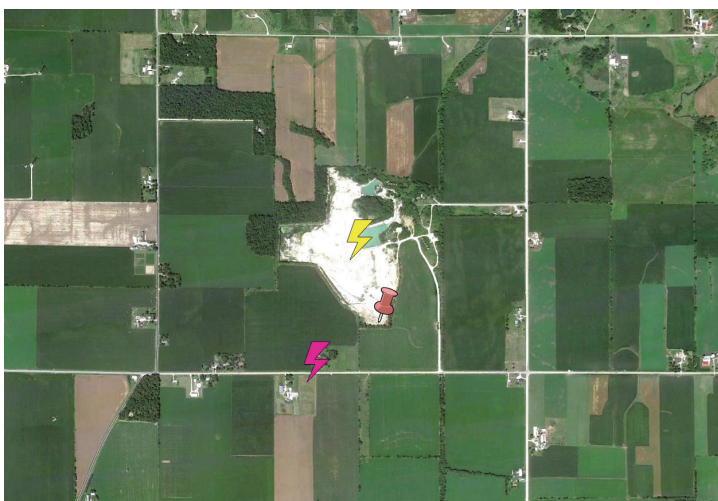
**1:16 PM** – The first in-cloud lightning pulse occurs 10 miles of the quarry – 22 minutes prior to injuries.



**1:26 PM** – In-cloud lightning pulses occur 5 miles of the quarry – 12 minutes prior to injuries.



**1:31 PM** – In-cloud (magenta) and cloud-to-ground (yellow) lightning continues to build at an unsafe distance as it approaches the quarry – 7 minutes prior to injuries.



**1:38 PM** – Actual cloud-to-ground lightning strike (yellow) that likely caused injuries.

WeatherBug offered clients in the area 22 minutes of advanced warning.

There were no NWS alerts associated with this event.

### This Event Demonstrates How Advanced Warning Can Help Save Lives

This event validates the tremendous value of TOTAL LIGHTNING. Total lightning data is critical and WeatherBug is the only provider that can detect TOTAL LIGHTNING at this level of precision.

WeatherBug equips management and personnel with a turnkey solution that constantly monitors dangerous weather conditions and issues customized alerts in real time. WeatherBug provides on-site detection and advanced alerts for lightning and severe weather to multiple locations via multiple methods—mobile devices, computers, indoor alerting devices and to outdoor alerting systems.