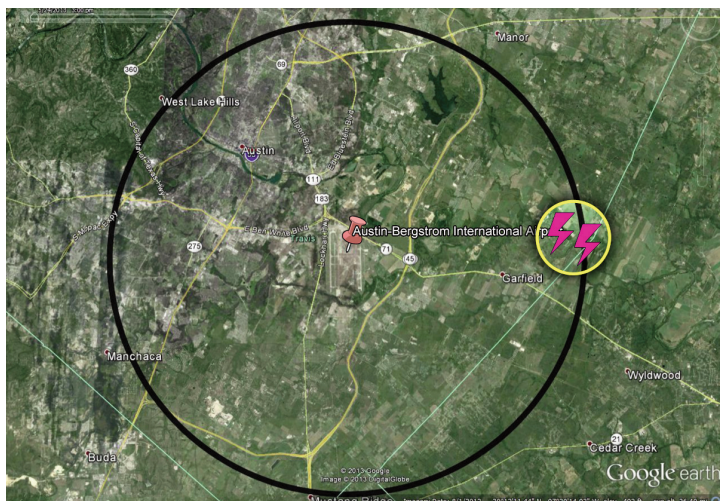
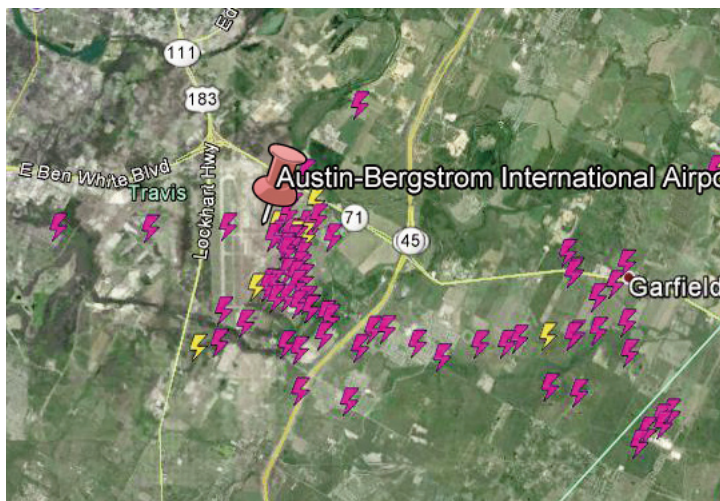


WeatherBug Safety Solutions

WHAT: Airport worker shook up after close lightning strike.
WHERE: Austin-Bergstrom International Airport, Austin, TX
WHEN: Friday, May 24th, 2013

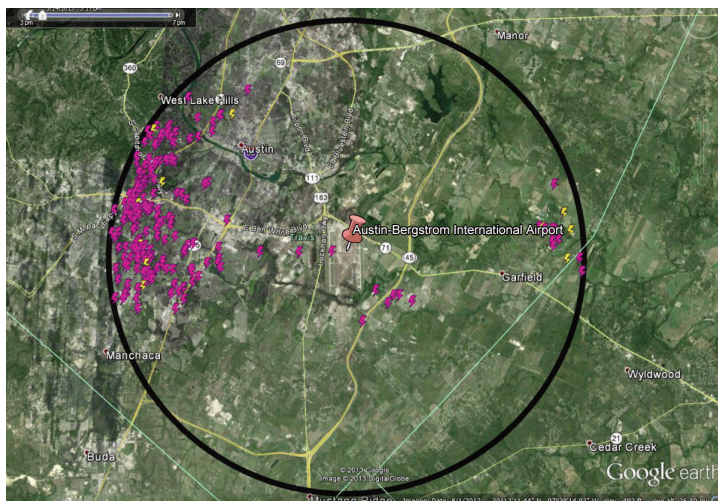


2:00 PM – The first in-cloud lightning strikes (magenta) are detected less than 10 miles east of the airport – 21 minutes prior to proximity strike.

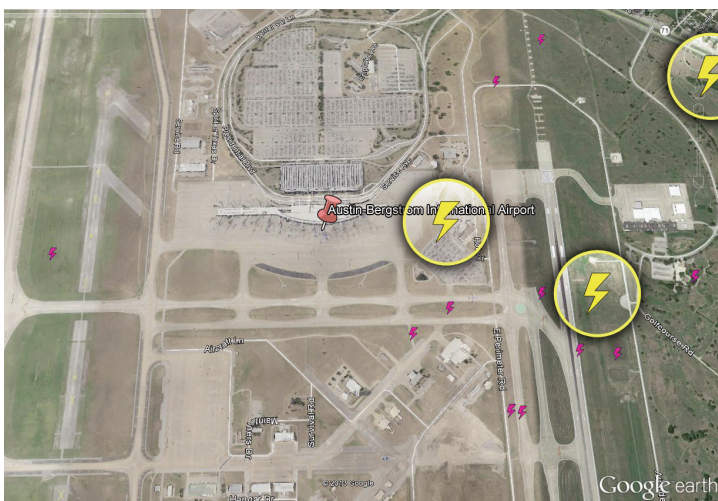


2:21 PM – Both in-cloud lightning and cloud-to-ground strikes engulf the airport; worker impacted.

WeatherBug Advanced Alert **21 minutes**



2:17 PM – In-cloud lightning intensifies; mostly west of the airport. Cloud-to-ground strikes (yellow) begin to appear east and west of airport.



2:21 PM – Three cloud-to-ground strikes detected on airport property. One was likely the "close call".

**WeatherBug offered clients in the area 21 minutes of advanced warning.
The National Weather Service did not issue any watches or warnings for this event.**

This Event Demonstrates How Advanced Warning Can Help Save Lives

This event validates the tremendous value of TOTAL LIGHTNING. Total lightning data is critical and WeatherBug is the only provider that can detect TOTAL LIGHTNING at this level of precision.

WeatherBug equips management and personnel with a turnkey solution that constantly monitors dangerous weather conditions and issues customized alerts in real time. WeatherBug provides on-site detection and advanced alerts for lightning and severe weather to multiple locations via multiple methods—mobile devices, computers, indoor alerting devices and to outdoor alerting systems.