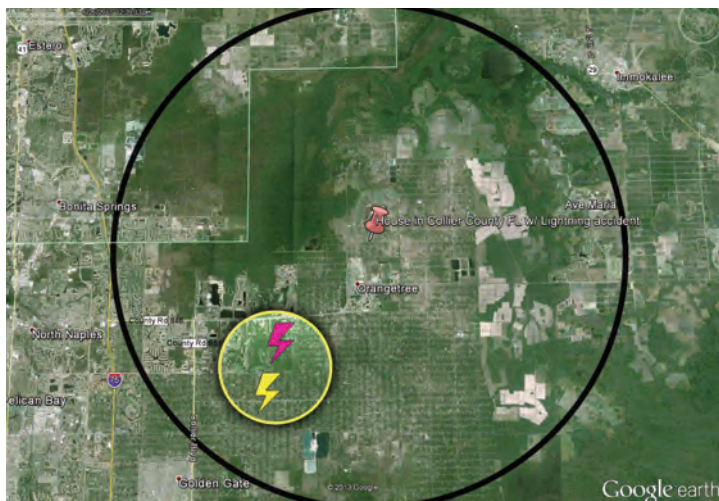


## WeatherBug Safety Solutions In Action

**WHAT:** Construction worker fatally injured while working on a house.

**WHERE:** Collier County, FL

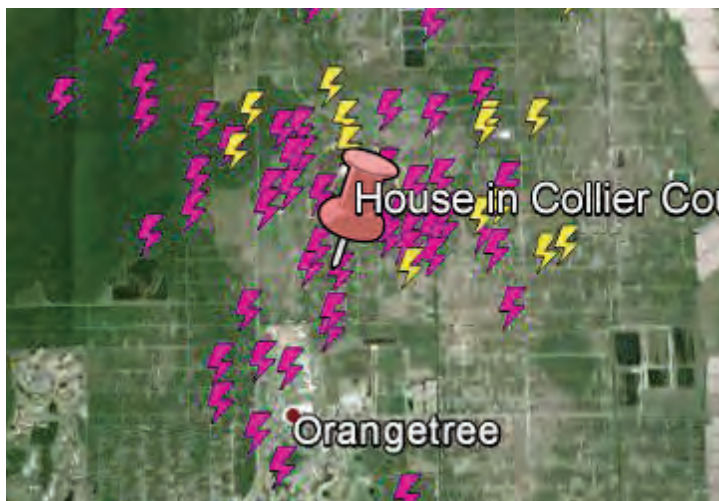
**WHEN:** Wednesday, June 26<sup>th</sup>, 2013



**12:39 PM** – The first lightning strikes within 10 miles of the house are detected 57 minutes prior to deadly strike. Cloud-to-ground (CG) lightning is yellow and in-cloud (IC) is magenta.



**12:59 PM** – CG lightning strikes approximately two miles from the house.



**1:36 PM** – Lightning intensifies within one mile of the house.



**1:36 PM** – Likely cloud-to-ground lightning strike, detected approximately 175 yards from the house, fatally injures construction worker.

**WeatherBug offered clients in the area 57 minutes of advanced warning.  
The National Weather Service did not issue any watches or warnings for this event.**

### This Event Demonstrates How Advanced Warning Can Help Save Lives

This event validates the tremendous value of TOTAL LIGHTNING. Total lightning data is critical and WeatherBug is the only provider that can detect TOTAL LIGHTNING at this level of precision.

WeatherBug equips management and personnel with a turnkey solution that constantly monitors dangerous weather conditions and issues customized alerts in real time. WeatherBug provides on-site detection and advanced alerts for lightning and severe weather to multiple locations via multiple methods—mobile devices, computers, indoor alerting devices and to outdoor alerting systems.