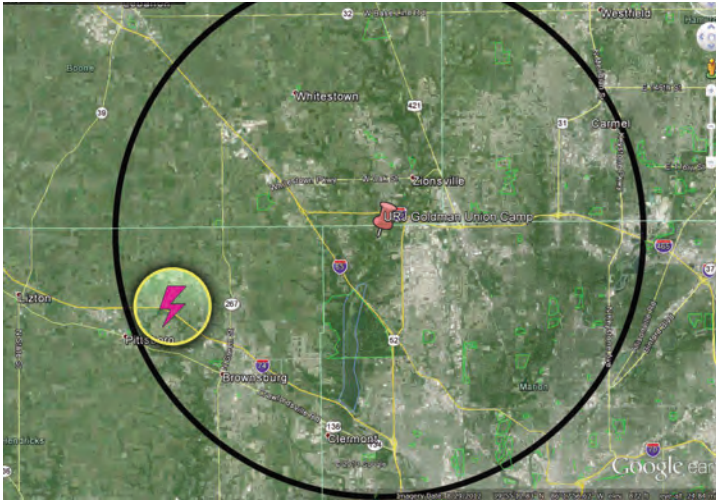


## WeatherBug Safety Solutions In Action

**WHAT:** Lightning strike injures 3 children at Jewish summer camp.

**WHERE:** Goldman Union Camp Institute, Indianapolis, IN

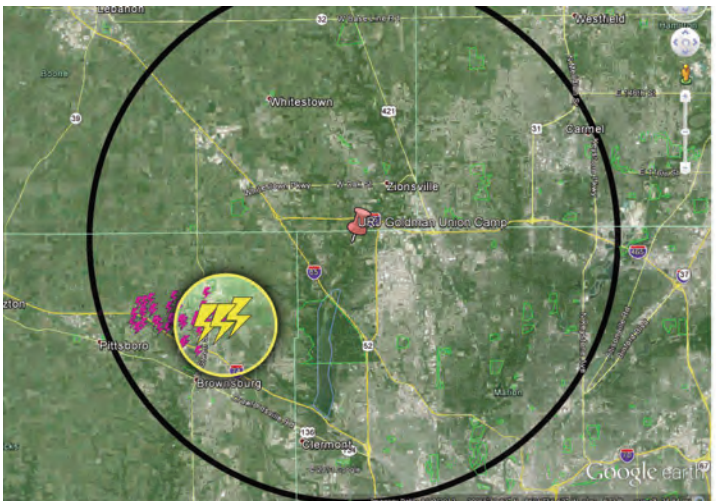
**WHEN:** Saturday, June 29<sup>th</sup>, 2013



**1:26 PM** – The first in-cloud lightning strike (magenta) occurs within 10 miles of camp – 12 minutes prior to injuries.



**1:26 to 1:33 PM** – Numerous in-cloud strikes approximately 6 miles from camp.



**1:35 PM** – The first cloud-to-ground strikes (yellow) appear as in-cloud strikes continue to build.



**1:38:03 PM** – This is the probable cloud-to-ground strike that resulted in the injuries to the campers.

**WeatherBug offered clients in the area 12 minutes of advanced warning.  
The National Weather Service did not issue any watches or warnings for this event.**

### This Event Demonstrates How Advanced Warning Can Help Save Lives

This event validates the tremendous value of TOTAL LIGHTNING. Total lightning data is critical and WeatherBug is the only provider that can detect TOTAL LIGHTNING at this level of precision.

WeatherBug equips management and personnel with a turnkey solution that constantly monitors dangerous weather conditions and issues customized alerts in real time. WeatherBug provides on-site detection and advanced alerts for lightning and severe weather to multiple locations via multiple methods—mobile devices, computers, indoor alerting devices and to outdoor alerting systems.