

WeatherBug Safety Solutions

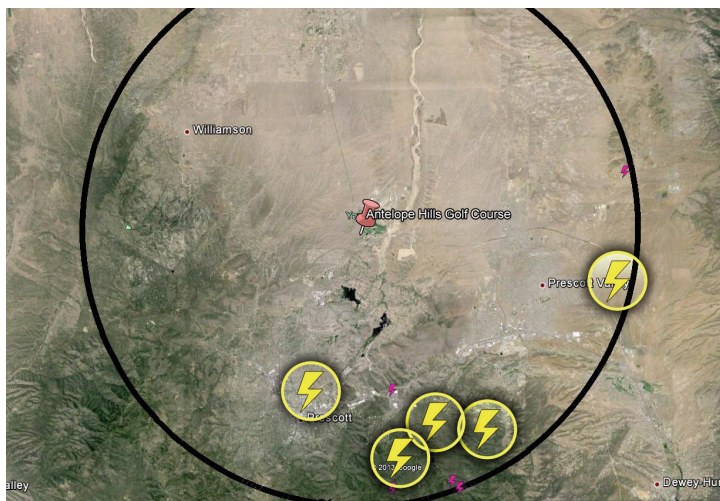
WHAT: Golfer injured by lightning during play.

WHERE: Antelope Hill Golf Course, Prescott, AZ

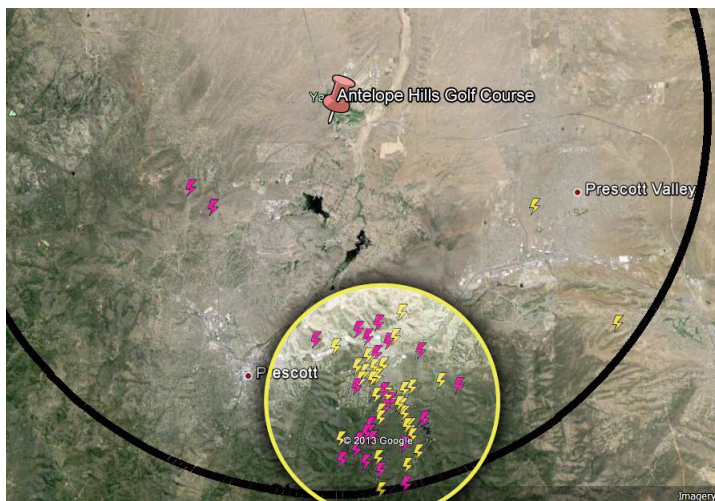
WHEN: Saturday, July 27th, 2013

WeatherBug Advanced Alert

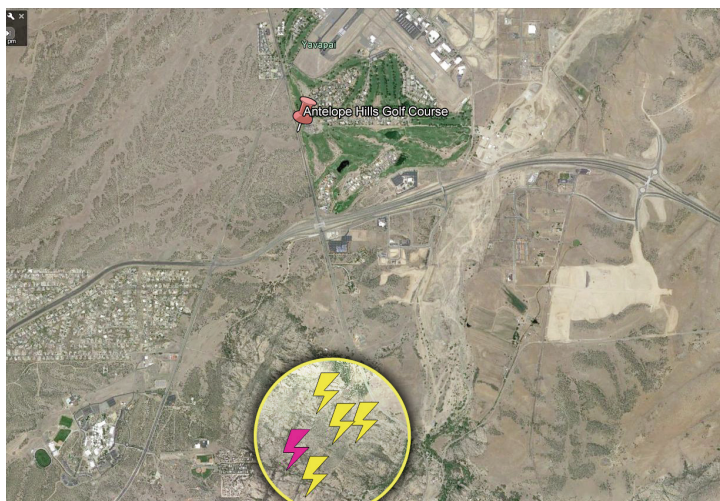
1 hour and 4 minutes



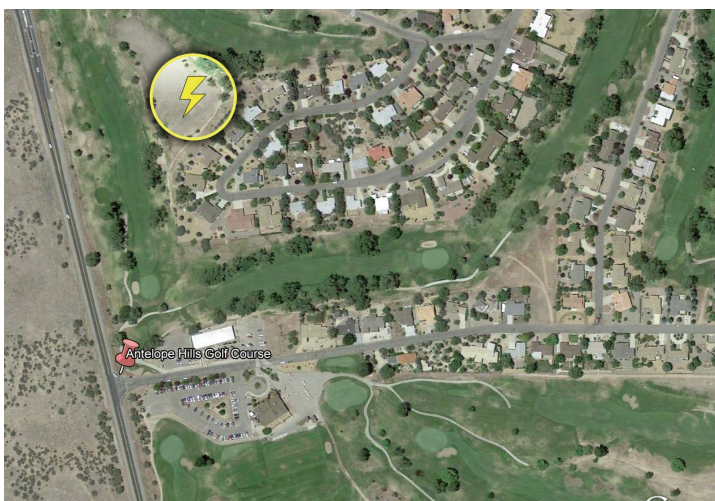
2:12 - 2:26 PM MDT – The first in-cloud (magenta) and cloud-to-ground (yellow) lightning strikes are detected within 10 miles of the club.



2:35 - 3:00 PM MDT – Cloud-to-ground lightning intensifies south of the club.



3:11 PM MDT – Cloud-to-ground strikes are now within 1.5 miles of the club.



3:16:49 PM MDT – A single cloud-to-ground lightning strike is detected on the golf course; impacting the golfer.

WeatherBug offered clients in the area 1 hour and 4 minutes of advanced warning.
The National Weather Service did not issue any watches or warnings for this event.

This Event Demonstrates How Advanced Warning Can Help Save Lives

This event validates the tremendous value of TOTAL LIGHTNING. Total lightning data is critical and WeatherBug is the only provider that can detect TOTAL LIGHTNING at this level of precision.

WeatherBug equips management and personnel with a turnkey solution that constantly monitors dangerous weather conditions and issues customized alerts in real time. WeatherBug provides on-site detection and advanced alerts for lightning and severe weather to multiple locations via multiple methods—mobile devices, computers, indoor alerting devices and to outdoor alerting systems.