

WeatherBug Safety Solutions In Action

WHAT Lightning strike during a West Virginia University football game shows need for lightning safety in large venues.

WHERE Coal Bowl, Morgantown, WV

WHEN: Sunday, September 4, 2011

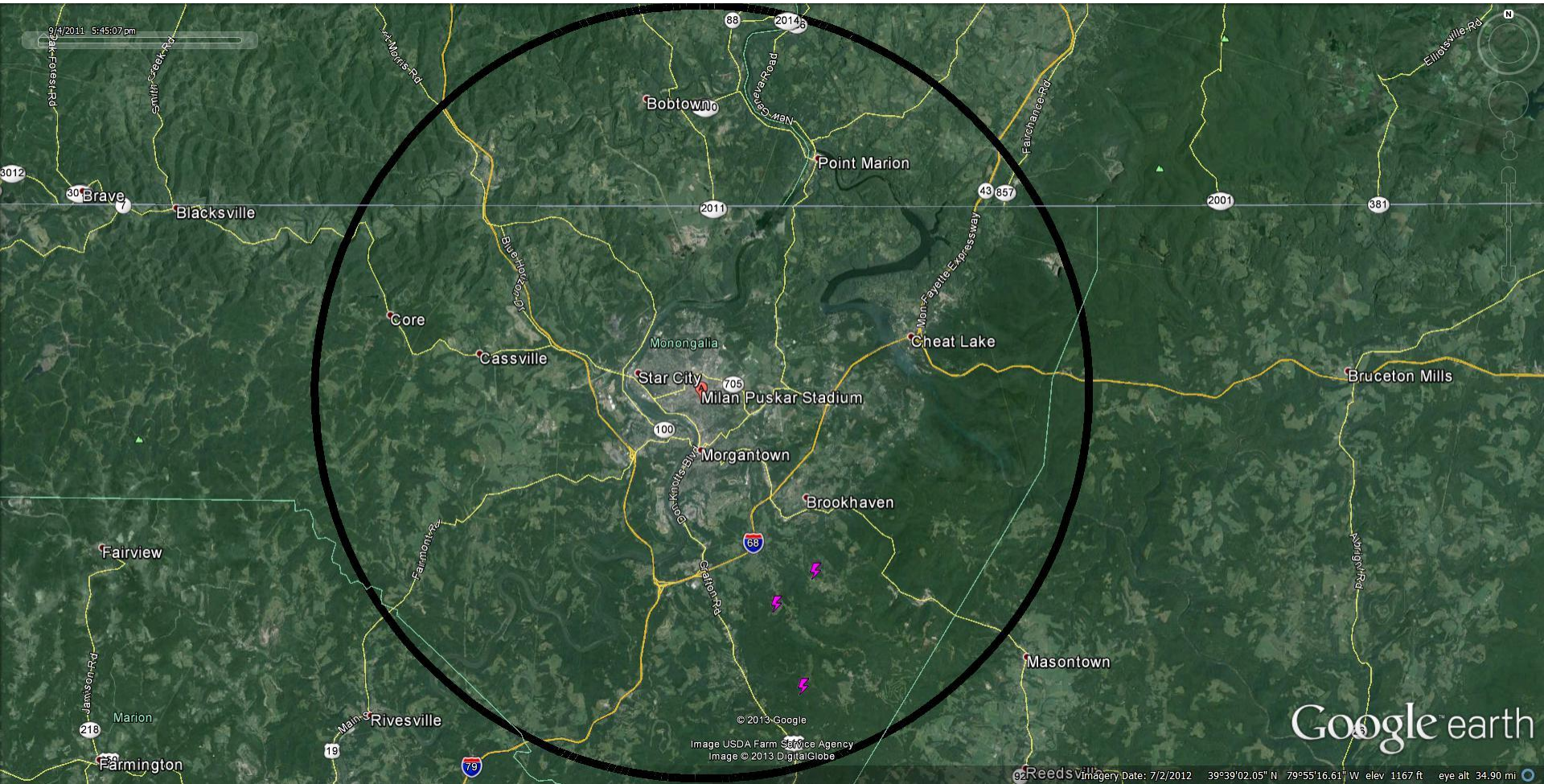
OUR ADVANCED ALERT: 17 Minutes



(Photo by Eric Brady, courtesy The Roanoke Times.)

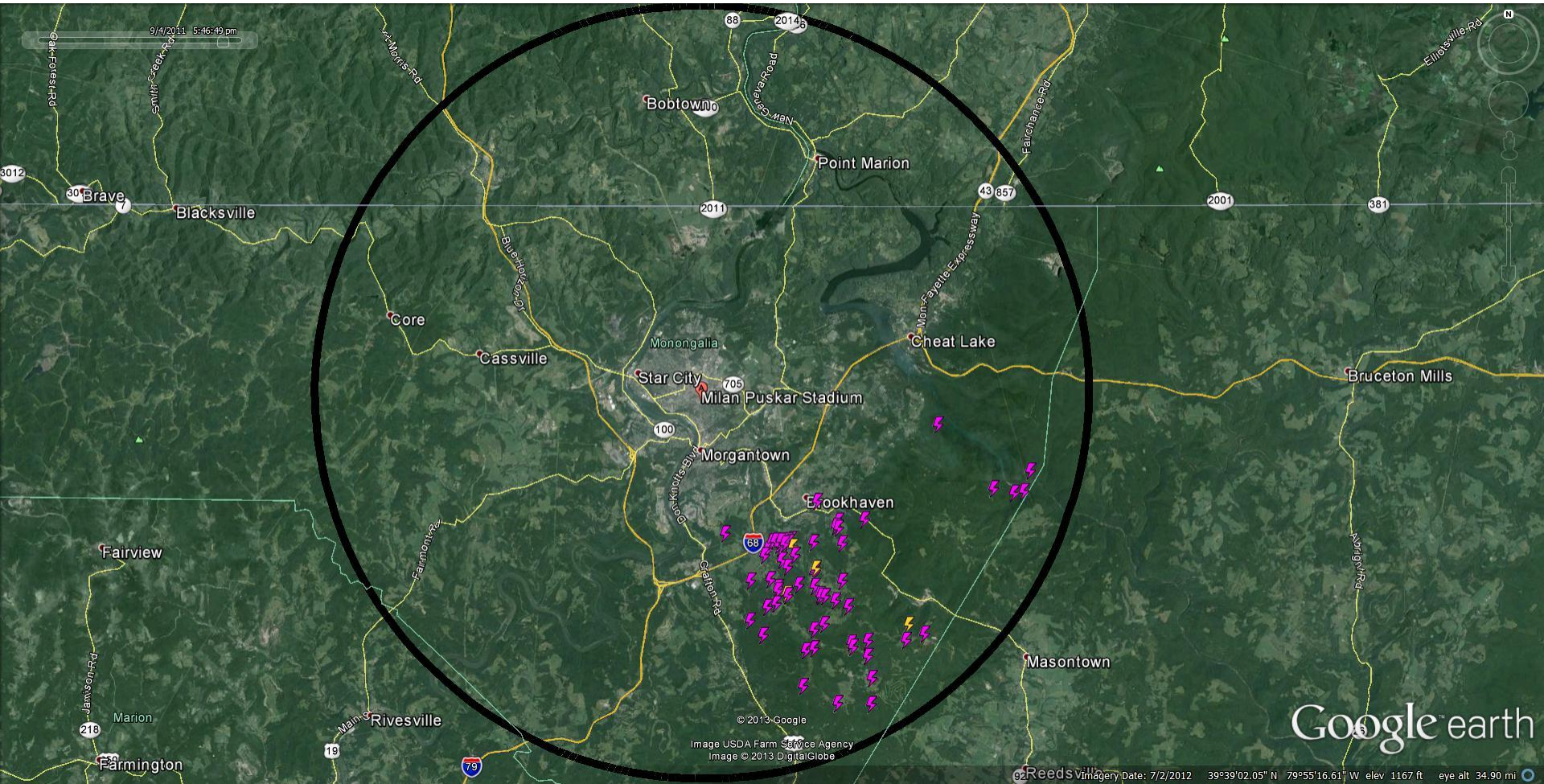
17 minutes prior to strike

5:45 PM EDT– WeatherBug Total Lightning detects the first in-cloud (magenta) lightning strikes within a 10-mile radius.



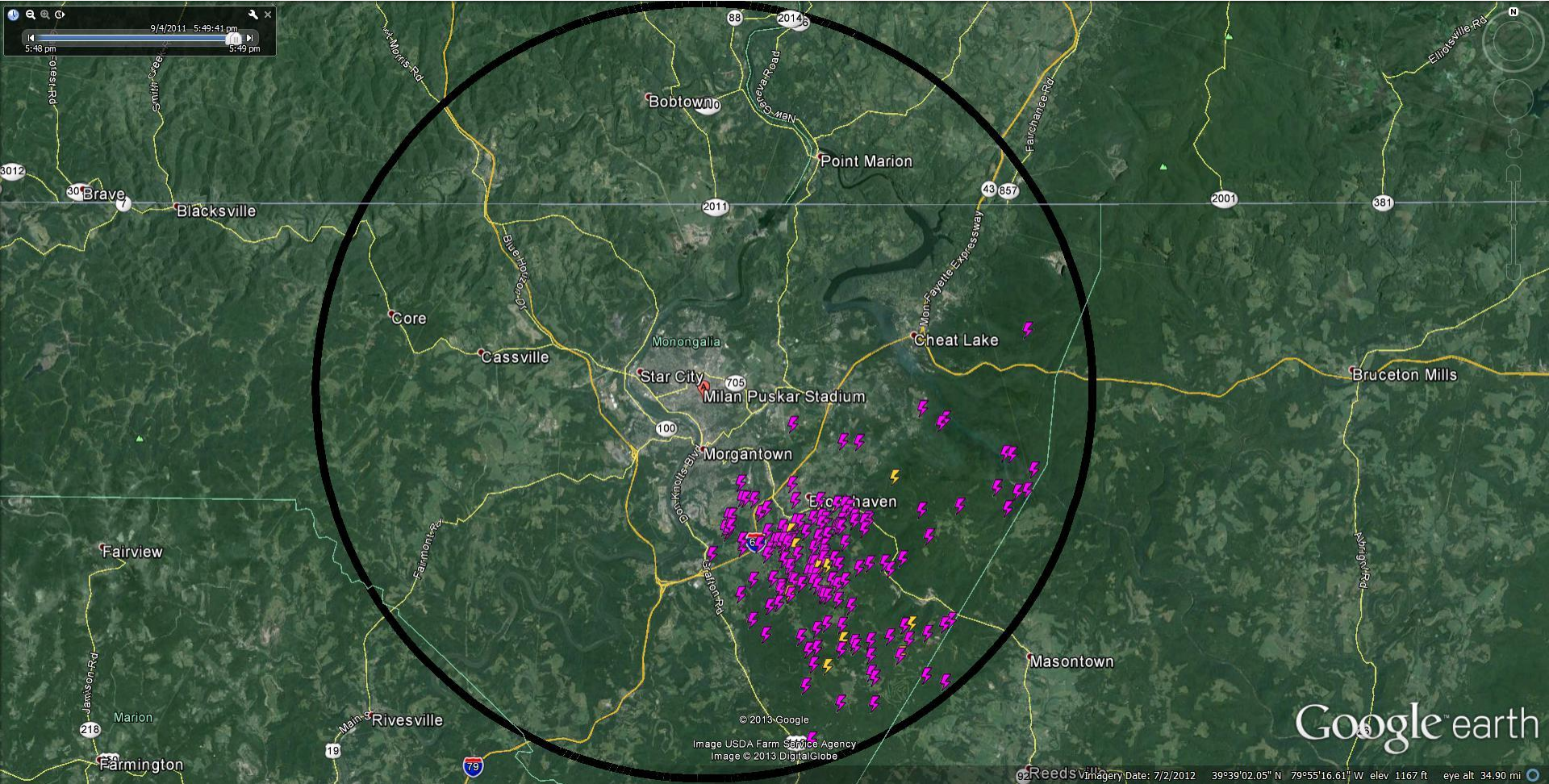
16 minutes prior to strike

5:46 PM EDT– In-cloud lightning intensifies; the first cloud-to-ground (yellow) strikes are detected within a 10-mile radius.



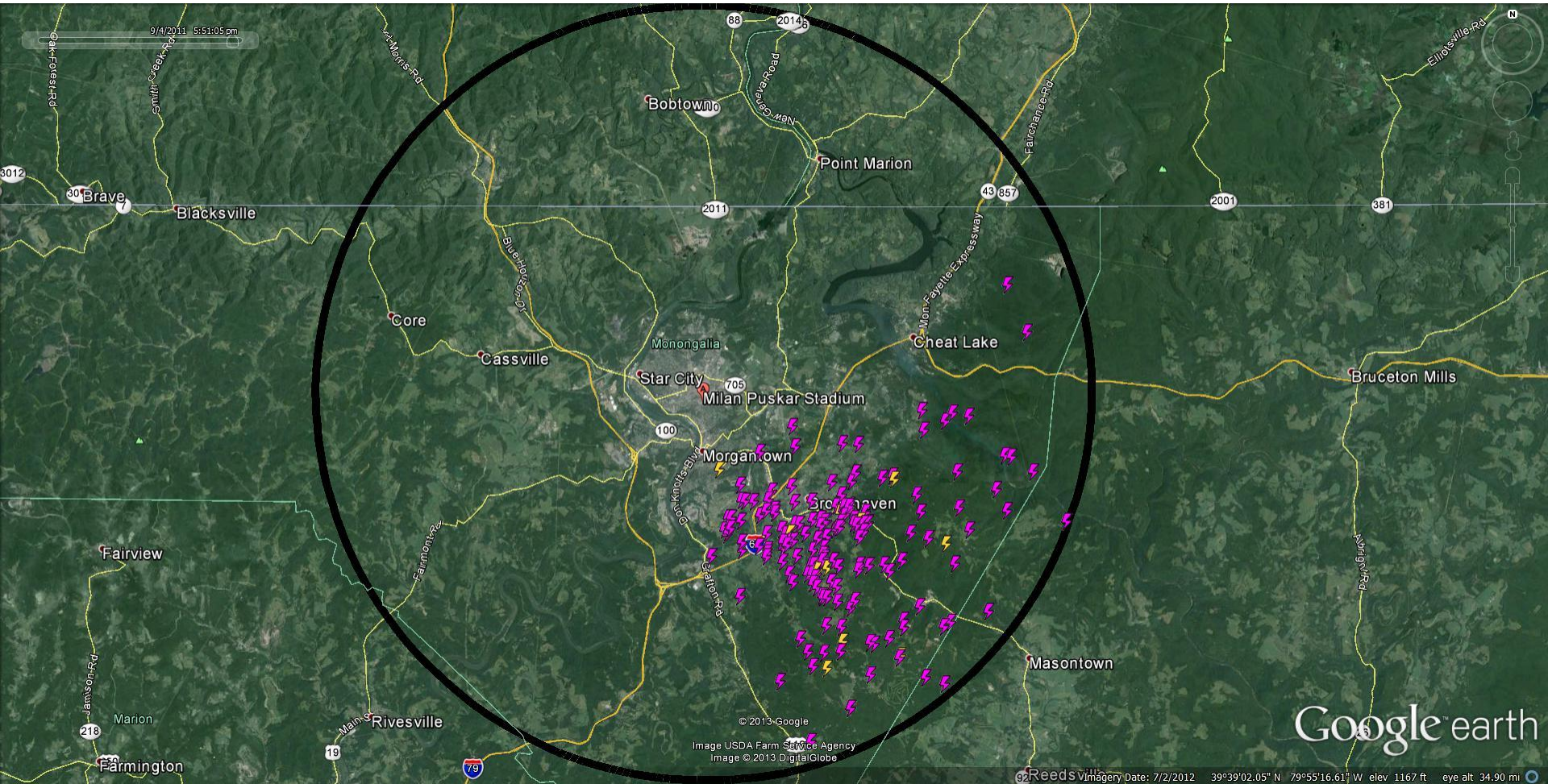
13 minutes prior to strike

5:49 PM EDT– Lightning continues to intensify as it approaches the stadium.



11 minutes prior to strike

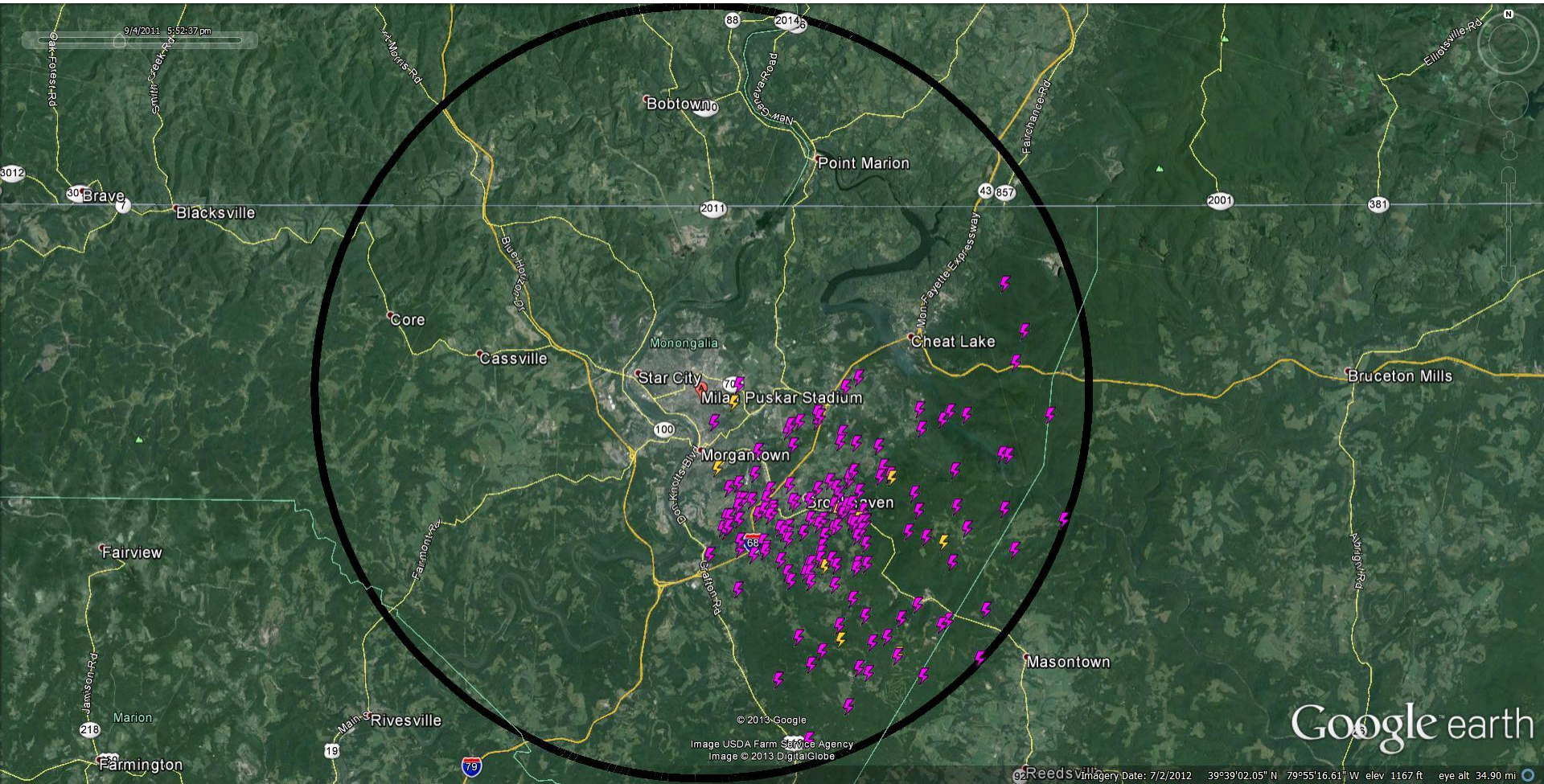
5:51 PM EDT– Lightning continues to intensify as it approaches the stadium. A cloud-to-ground strike is detected less than 2 miles from the stadium.



The National Weather Service issued a severe thunderstorm warning at 5:51 PM EDT

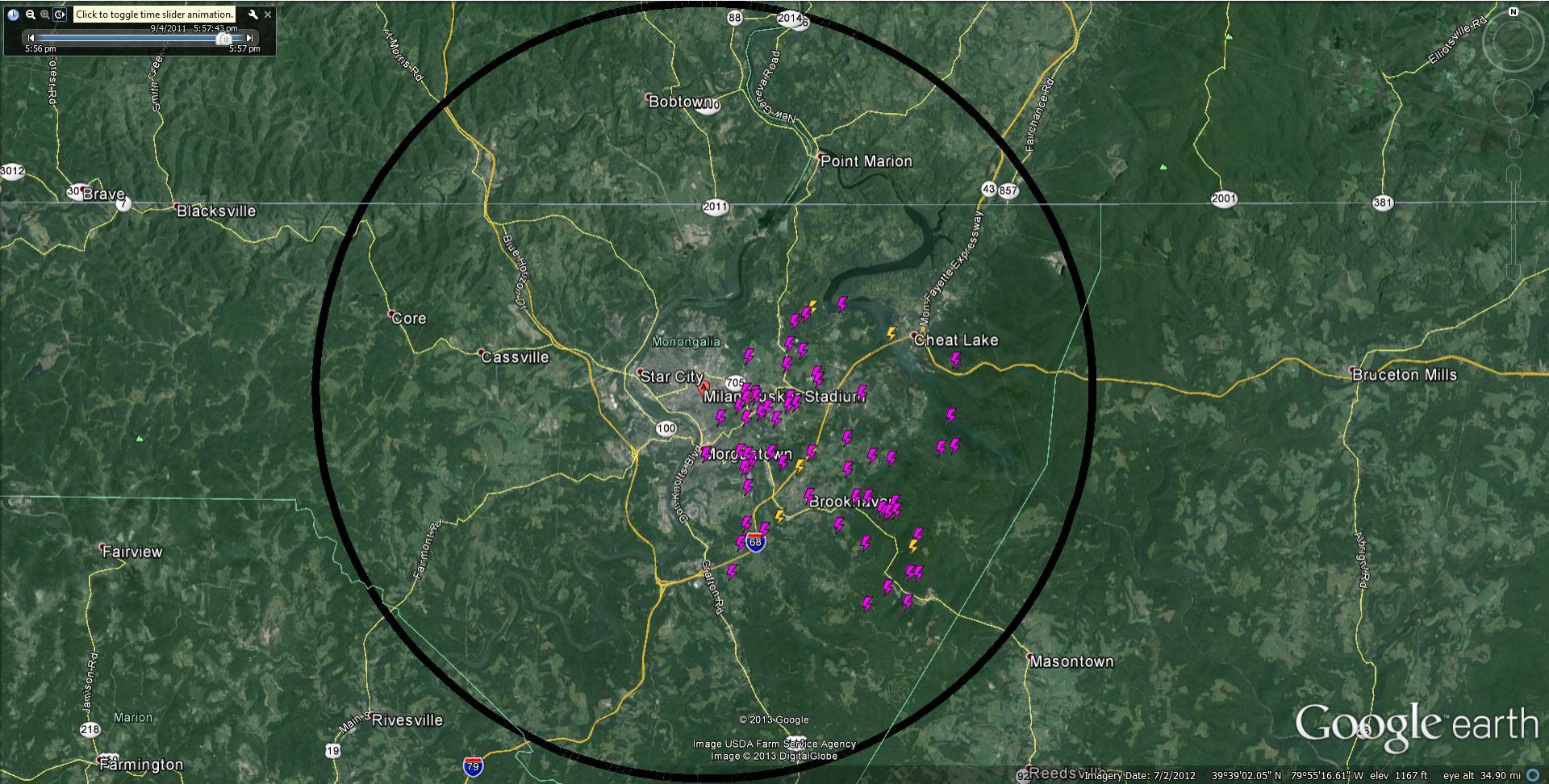
10 minutes prior to strike

5:52 PM EDT– Lightning continues to intensify as it approaches the stadium. A cloud-to-ground strike is detected less than 1 mile from the stadium.

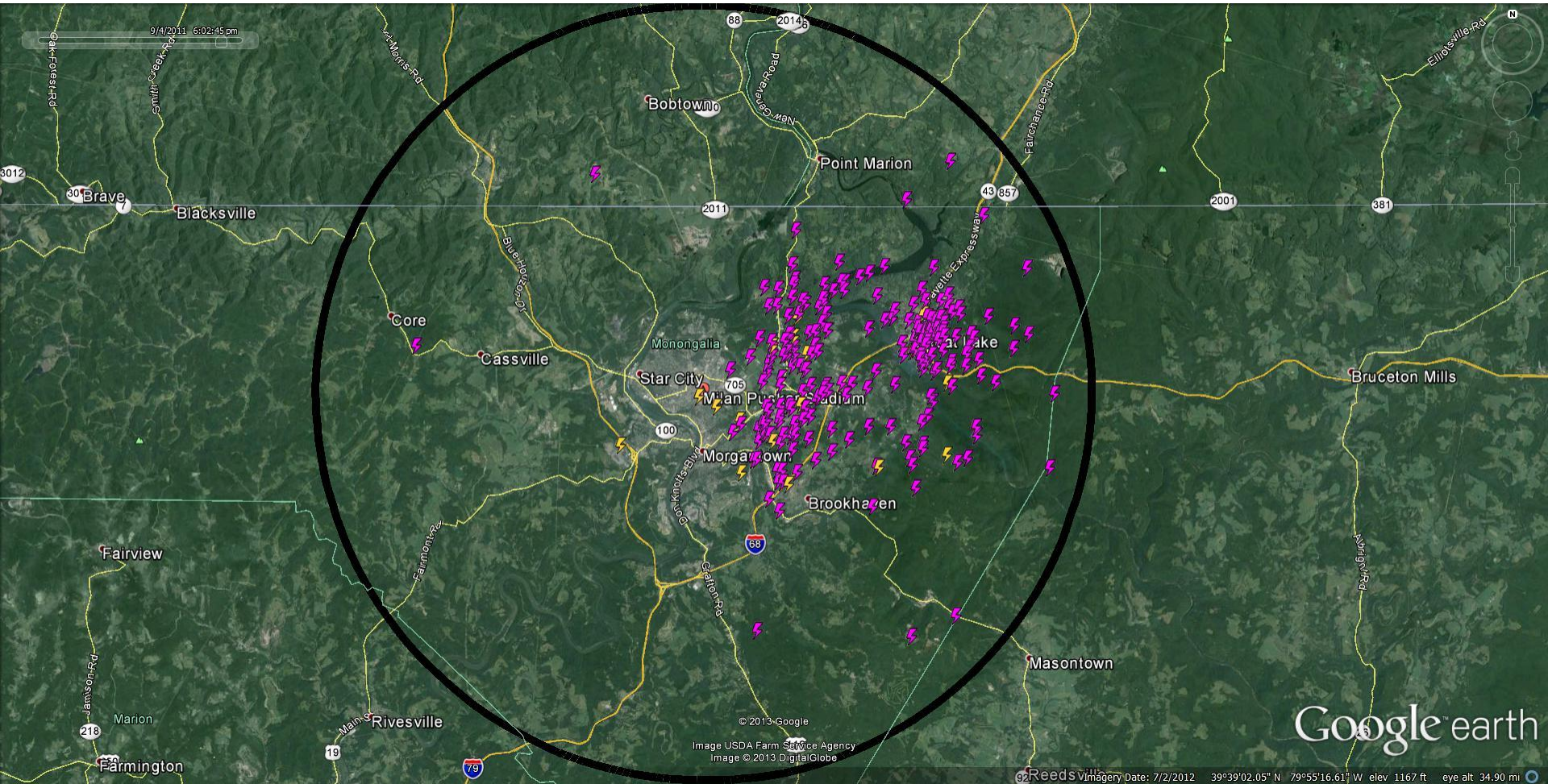


5 minutes prior to strike

5:57 PM EDT– In-cloud lightning strikes continue near the stadium at an unsafe range.

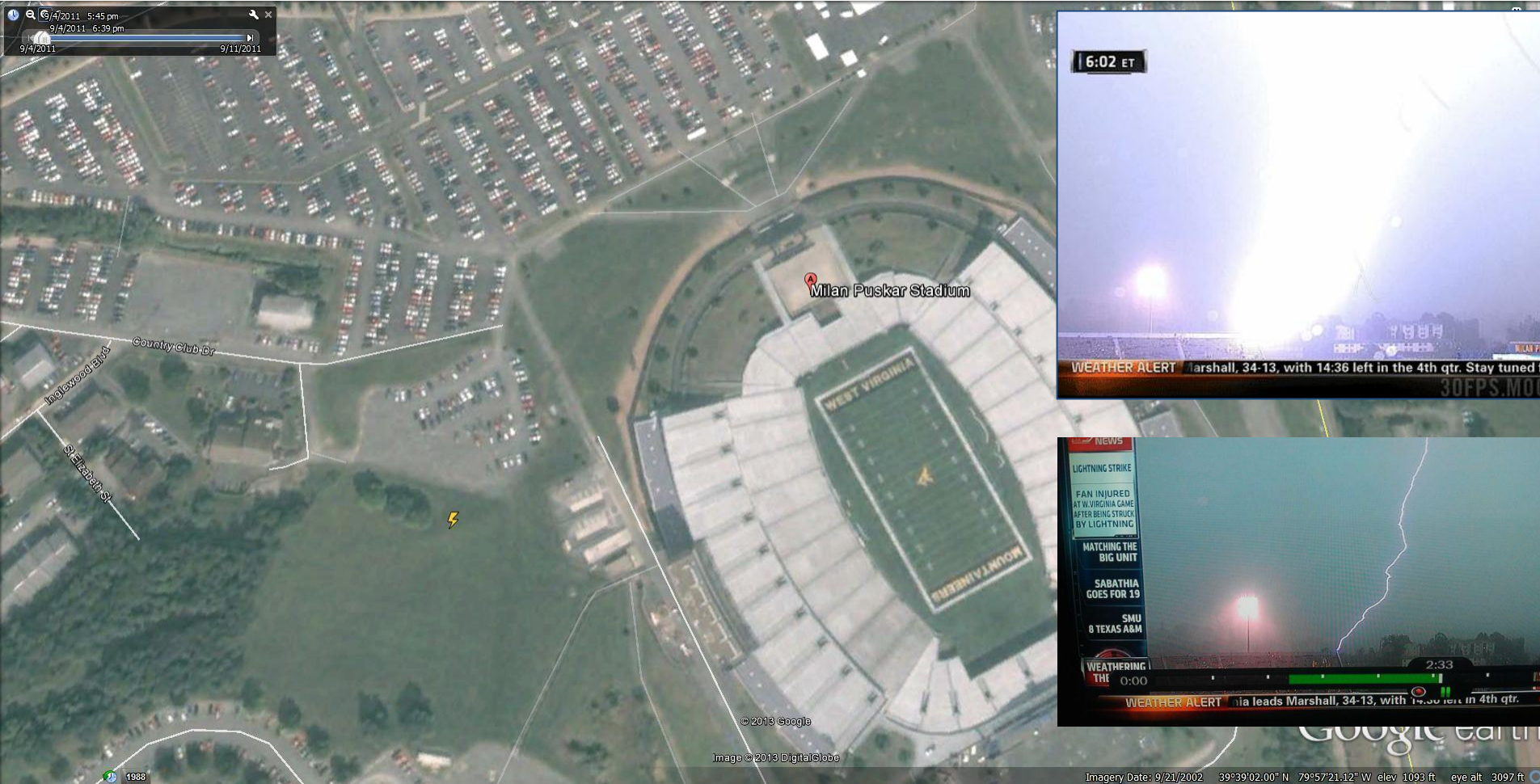


CLOUD-TO-GROUND LIGHTNING STRIKE ON STADIUM GROUNDS
6:02 PM EDT– WeatherBug detects a cloud-to-ground lightning strike on stadium grounds. The game is called due to lightning.



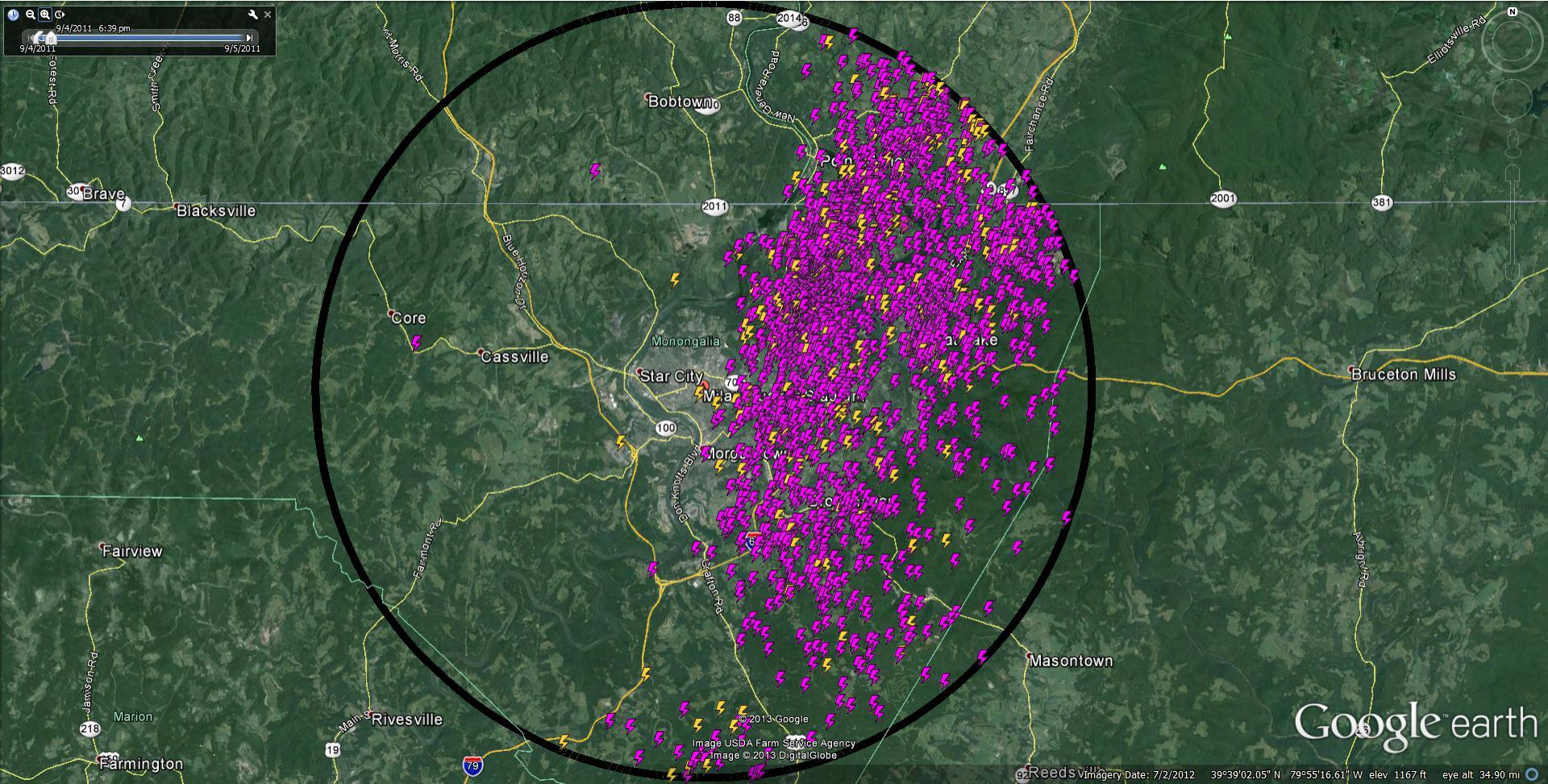
The game was called with 14:34 remaining in the fourth quarter, after two lengthy delays caused by lightning strikes in the area.

CLOUD-TO-GROUND LIGHTNING STRIKE ON STADIUM GROUNDS
6:02 PM EDT– WeatherBug detects a cloud-to-ground lightning strike on stadium grounds. The game is called due to lightning.



The game was called with 14:34 remaining in the fourth quarter, after two lengthy delays caused by lightning strikes in the area.

Total Lightning for the event.





JEFF GENTNER/AP

View News Report:

<http://www.sbnation.com/ncaa-football/2011/9/4/2405242/officials-deny-report-west-virginia-fan-being-struck-by-lightning-espn>

<http://www.nydailynews.com/sports/college/wvu-marshall-lightning-delays-time-ncaa-revisit-game-official-article-1.955072>

Here is another article just highlighting how it might have been a false claim that a WVU fan was struck by lightning during one of the 2 delays that occurred that evening.

<http://www.sportingnews.com/ncaa-football/story/2011-09-05/west-virginia-denies-espn-report-that-fan-was-struck-by-lightning>

View more case studies:

<http://earthnetworks.com/IndustrySolutions/CaseStudies>

No other system provides this level of lightning detection, accuracy and advanced notification.



know before.SM

The vast majority of lightning stays in the sky and jumps from cloud-to-cloud. Meteorologists and climate scientists have long known that this in-cloud lightning is an early sign of impending severe weather – including dangerous and even deadly cloud-to-ground strikes that kill 50 people, on average, every year and injure far more.

Knowing that in-cloud lightning plays a key role in the formation and intensity of many kinds of extreme weather, we established [the world's largest and most advanced lightning sensor network](#). The sensors in our network continuously **monitor**, **calculate** and **report** where and when lightning strikes occur in the clouds or on the ground – what meteorologists call **total lightning**.

Our advanced technology based on state-of-the-art lightning sensors and networking technology now makes it possible for us to provide our customers with **peace of mind** when storms with lightning are in the area.

On mobile: WeatherBug's Spark is the only mobile tool delivering minute-by-minute, mile-by-mile lightning strike information for [Android devices](#), [iPhone](#) and [iPad](#).

On PCs: [StreamerRT](#) is the most comprehensive and user-friendly tool available to visualize live and forecast weather conditions at local, regional, national and international levels for critical decision-making.

Outdoors: [Outdoor mass notification system](#) for schools, parks, athletic facilities, stadiums and other outdoor venues where safety is a priority.