

WeatherBug Safety Solutions In Action

WHAT Lightning strike at football game demonstrates the need for lightning warning systems.

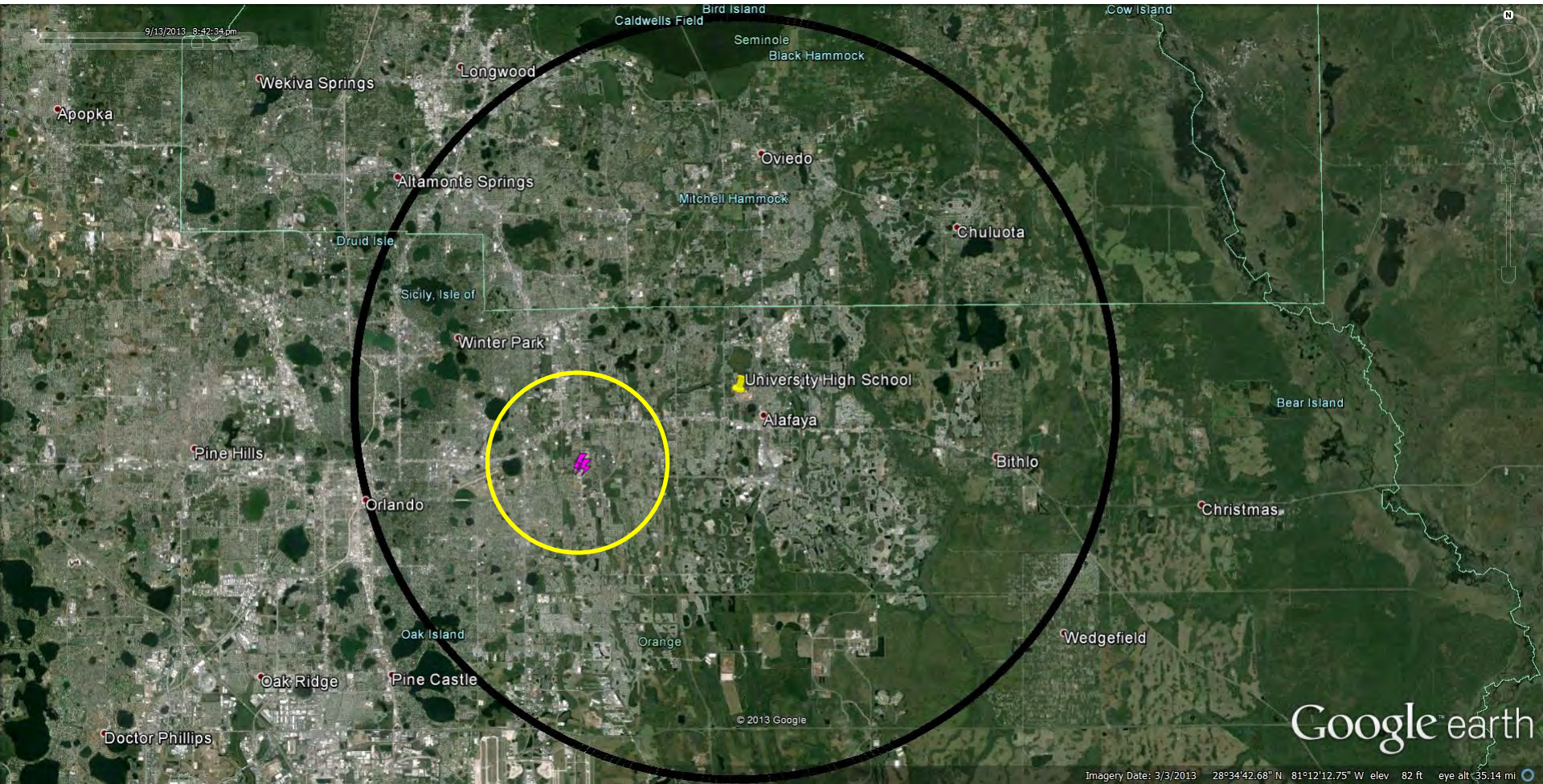
WHERE University High School, Orlando, FL

WHEN: Friday, September 13, 2013, 8:45 PM EDT

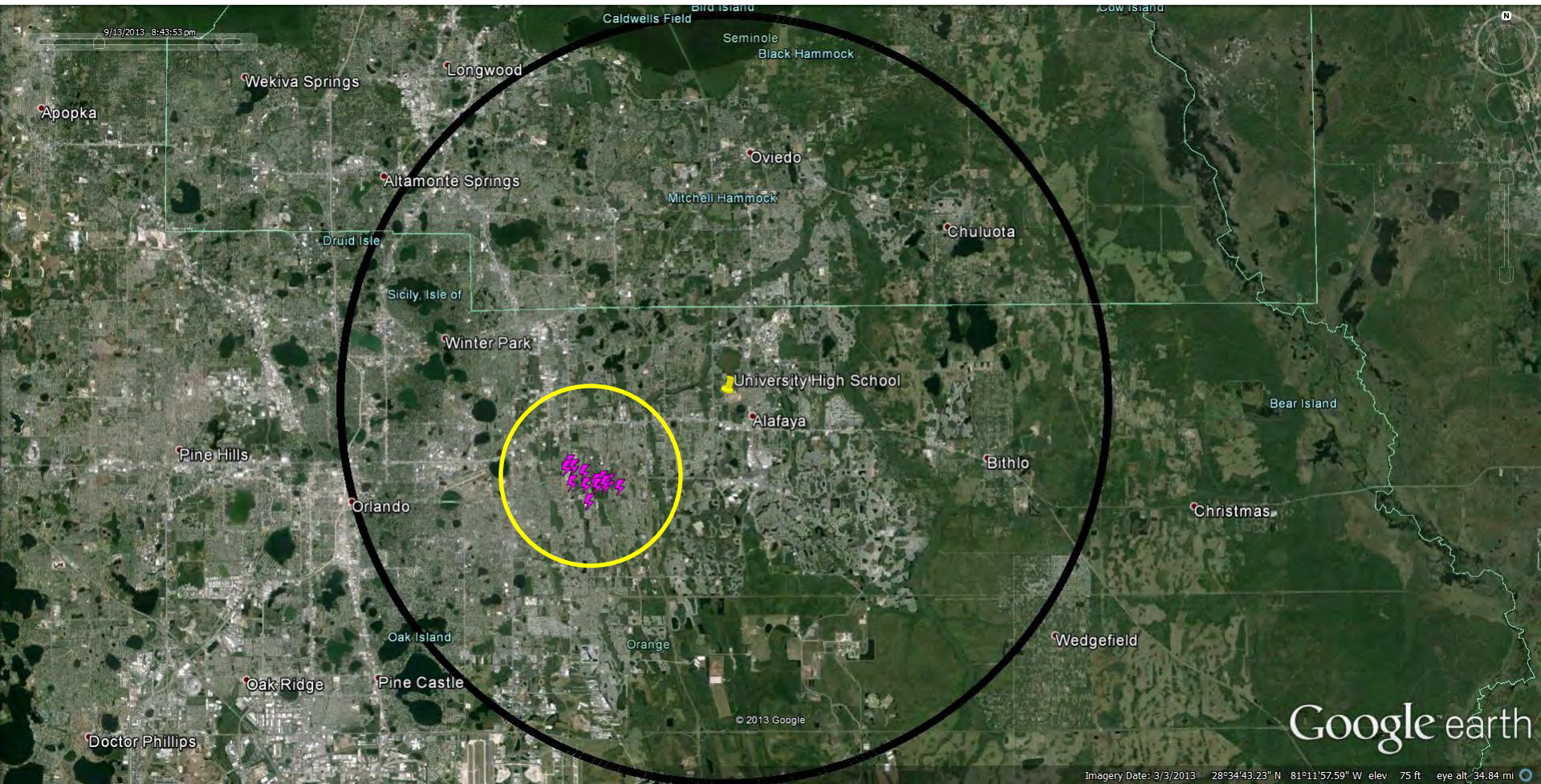
OUR ADVANCED ALERT: 3 minutes advanced warning.



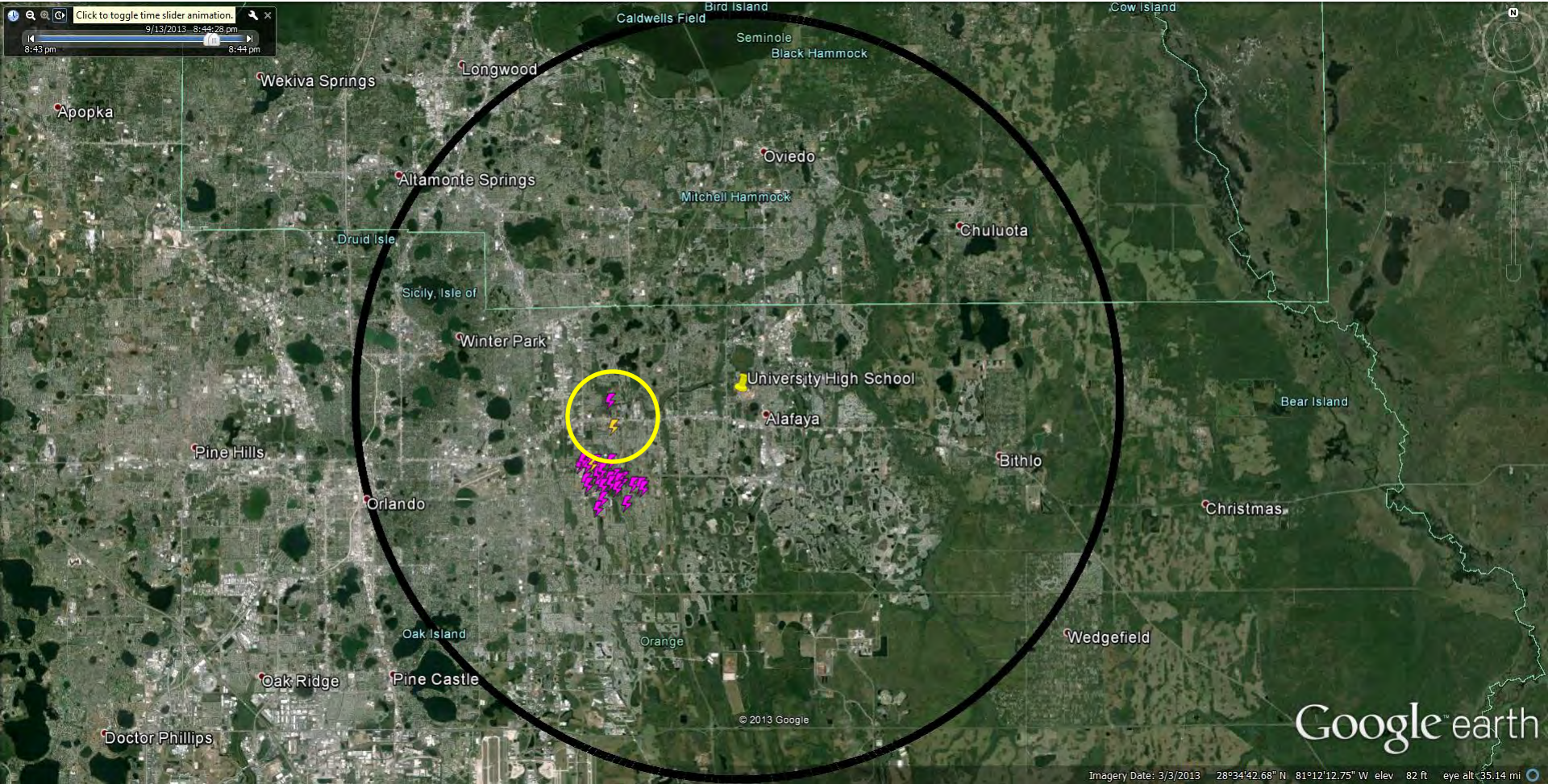
3 minutes prior to strike during high school football game
8:42 PM EDT– In-cloud lightning (magenta) is detected less than 5 miles away. Shown: A 10-mile radius around the school.



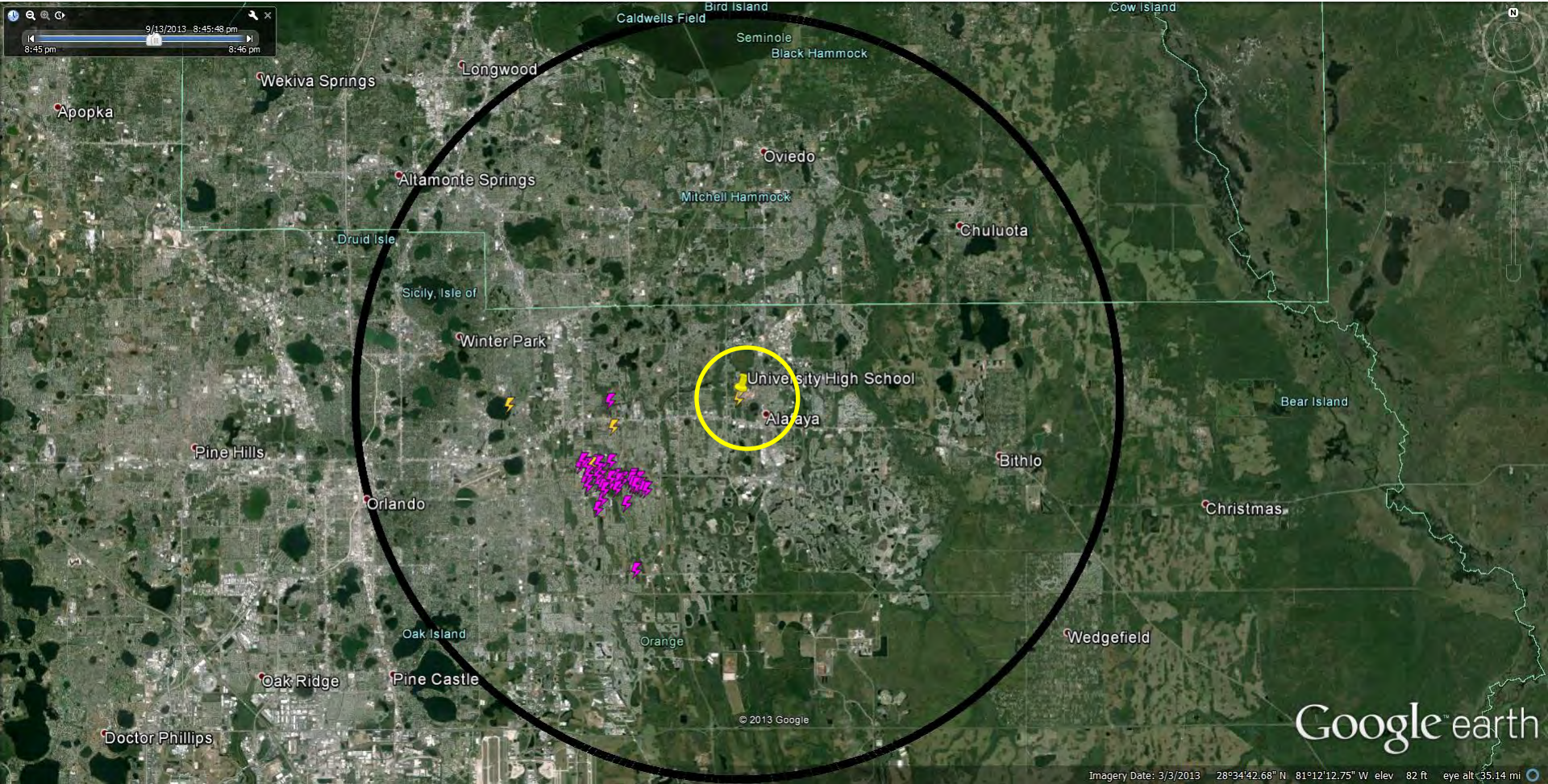
2 minutes prior to strike during high school football game
8:43 PM EDT – Additional in-cloud lightning is detected less than 5 miles away.



1 minute prior to strike during high school football game
8:44 PM EDT – A cloud-to-ground strike (yellow) and an in-cloud strike are detected less than 3.5 miles away.



CLOUD-TO-GROUND LIGHTNING STRIKES TREE BY STADIUM BLEACHERS
8:45:45 PM EDT – A cloud-to-ground lightning strike hits a tree on school grounds, near unsuspecting fans. Luckily, no one was injured.



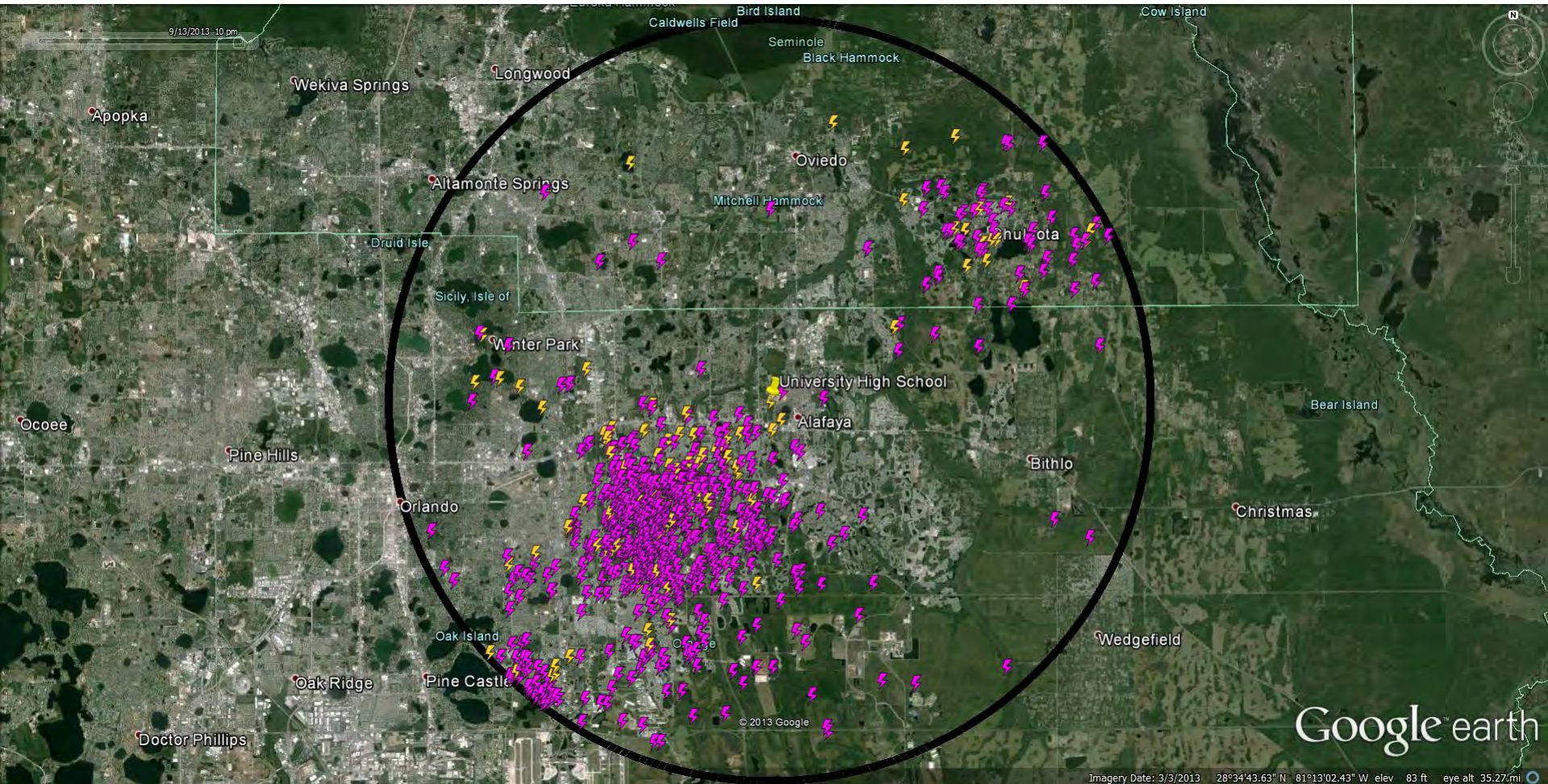
CLOUD-TO-GROUND LIGHTNING STRIKES TREE BY STADIUM BLEACHERS

8:45:45 PM EDT – A cloud-to-ground lightning strike hits a tree on school grounds, near unsuspecting fans. Luckily, no one was injured.



There were no NWS alerts associated with this event.

Total Lightning for the event.



There were no NWS alerts associated with this event.



<http://www.youtube.com/watch?v=nv5EHcPWh4s&feature=c4-overview&list=UU-MCjIJ5Wo61YyzJiC7Mh7w>

View more case studies:

<http://earthnetworks.com/IndustrySolutions/CaseStudies>

This Event Demonstrates How Advanced Warning Can Help Save Lives



know before.SM

The vast majority of lightning stays in the sky and jumps from cloud-to-cloud. Meteorologists and climate scientists have long known that this in-cloud lightning is an early sign of impending severe weather – including dangerous and even deadly cloud-to-ground strikes that kill 50 people, on average, every year and injure far more.

Knowing that in-cloud lightning plays a key role in the formation and intensity of many kinds of extreme weather, we established [the world's largest and most advanced lightning sensor network](#). The sensors in our network continuously **monitor**, **calculate** and **report** where and when lightning strikes occur in the clouds or on the ground – what meteorologists call **total lightning**.

Our advanced technology based on state-of-the-art lightning sensors and networking technology now makes it possible for us to provide our customers with **peace of mind** when storms with lightning are in the area.

On mobile: WeatherBug's Spark is the only mobile tool delivering minute-by-minute, mile-by-mile lightning strike information for [Android devices](#), [iPhone](#) and [iPad](#).

On PCs: [StreamerRT](#) is the most comprehensive and user-friendly tool available to visualize live and forecast weather conditions at local, regional, national and international levels for critical decision-making.

Outdoors: [Outdoor mass notification system](#) for schools, parks, athletic facilities, stadiums and other outdoor venues where safety is a priority.