

Weather Station

At the heart of the Earth Networks weather network is the Earth Networks-WeatherBug Weather Station. This professional-grade, state-of-the-art weather station records 27 different weather variables and provides weather data directly to Earth Networks-WeatherBug customers, with live data updated every two seconds.

What Does the Earth Networks-WeatherBug Weather Station Include?



1. Wind Sensor

Wind speed and direction.

2. Sensor Shelter

Temperature, relative humidity, heat index, wind chill, barometric pressure, dew point, wet bulb and more.

3. Rain Gauge

Daily, monthly and yearly rainfall totals and averages.

4. Lightning Sensor (optional)

Integrated In-Cloud (IC) and Cloud-to-Ground (CG) lightning detection sensor.

5. HD PTZ Camera (optional; more on reverse side)

An HD PTZ camera incorporates state-of-the-art image enhancement technologies in a compact body that enable users to capture clear and bright images and video even in challenging environments.

6. Network Appliance

An IP-enabled device that connects easily to the internet, provides fast transmission of your weather station data, has a 72-hour battery life and automatically reboots as needed.

7. LCD Weather Display (more on reverse side)

The bright screen on this LCD provides you with a highly visible way to display data from your weather station, including: **Current Conditions, Forecast, Doppler Radar, Local Weather Alerts and Live Camera Images.**

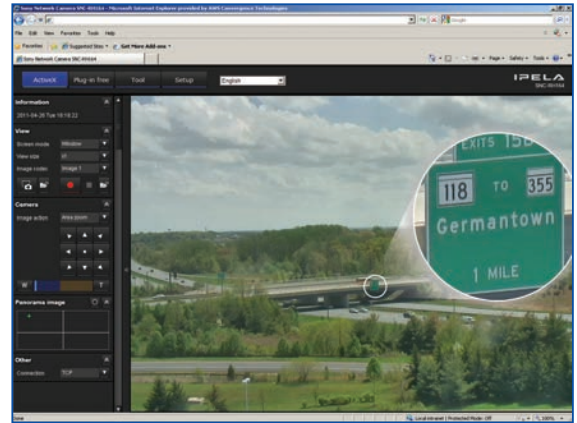
Built to withstand and measure all kinds of weather, an Earth Networks-WeatherBug Weather Station requires very little maintenance and is fully automated. Should there be a maintenance problem, issues can be evaluated and diagnosed remotely by calling our unlimited-usage, toll-free technical support service. The Earth Networks-WeatherBug Weather Station includes a comprehensive one-year warranty.

Pan-Tilt-Zoom (PTZ) HD Camera

The ultimate in monitoring solutions, the PTZ high-definition camera combined with an intuitive web-based camera control interface provides you with a bird's eye view to monitor live weather events and daily operations. Once installed and connected to your local network*, you have total access to the camera control system and the ability to scan the horizon, alter viewing angle, change the zoom level and more. Key features include:

- **Capture images and record video**
- **HD resolution / 16x9 aspect ratio images**
- **Endless 360-degree high-speed panning**
- **Extreme zoom with 10x optical HD lens**

*Existing internet connection required.



The PTZ's advanced programming allows users to "drive" the cameras using simple controls. The 10x optical zoom lens allows for extreme close-ups.



LCD Weather Display

View the latest live, local weather on this 15" LCD weather display. The Earth Networks LCD Weather Display offers a window into the world around you by providing quick access to important real-time weather data, including:

- **Current Conditions**
- **3-Day Forecast**
- **Live Camera Images**
- **Doppler Radar**
- **Local Weather Alerts**

PTZ HD CAMERA SPECIFICATIONS

Frame Transfer	Up to 30 frames per second (FPS)
Electronic Shutter Speed	1/1 to 1/10,000 s
Lens Type	Auto-focus zoom lens
Zoom Ratio	Optical: 28x; Digital 12x; Total: 336x
Horizontal Viewing Angle	55.9 to 2.1 degrees
Focal Length	3.5 to 98 mm
Pan Angle	360 degrees endless rotation
Pan Speed	300 degrees/s (max.)
Tilt Angle	210 degrees
Tilt Speed	300 degrees/s (max.)
Power Requirements	AC24V
Power Consumption	60 W max.
Dimensions	11.5 x 21.5 x 11.5 inches
Weight of Camera and Housing	13 pounds
Operating Temperature Range	-20° to +122°F

LCD WEATHER DISPLAY SPECIFICATIONS

Screen	15" flat panel LCD
Input	Remote control
Aspect Ratio	4:3
Resolution	1024x768
Processor	Telechip 8900
DSP Type	ARM 32-bit
Clockspeed	800mhz
RAM	256 MB DDR
Ethernet Port	Yes
WiFi	802.11b/g
WiFi Security	WEP, WPA, WPA2
Ports	Mini USB, USB, SD, Audio (3.5MM), Ethernet (RJ45)
Power	AC100-240V ±10% 50/60Hz ±3%, DC 12V ±5% @ 3A
Dimensions	12.3 x 15.2 x 1.5 inches; 4.3 lbs