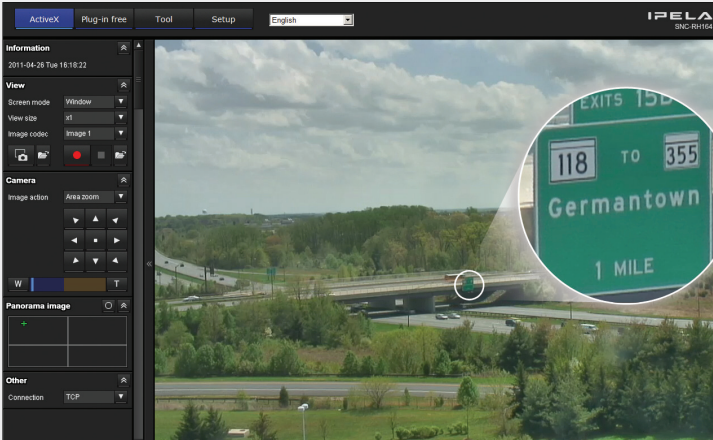


## PTZ Camera Solution

The PTZ's advanced programming allows users to "drive" the camera using simple controls. The 10x optical HD zoom lens allows for extreme close-ups.



### Pan-Tilt-Zoom (PTZ) HD Camera

The ultimate in monitoring solutions, the PTZ high-definition motion camera combined with an intuitive web-based camera control interface provides you with a bird's eye view to monitor live weather events and daily operations. Once installed and connected to your local network\*, you have total access to the camera control system and the ability to scan the horizon, alter the viewing angle, change the zoom level and more!

#### Key features:

- Capture images and record video
- Endless 360-degree high-speed panning
- HD resolution / 16x9 aspect ratio images
- Extreme zoom with 10x optical HD lens

Now you can view images in real-time, enabling you to monitor critical assets while enhancing your visibility of the community and infrastructure during severe weather and throughout the day.

\* Existing internet connection required.

SPECIFICATIONS	
Frame Transfer	Up to 30 frames per second (FPS)
Electronic Shutter Speed	1/2 to 1/10,000 s
Lens Type	Auto-focus zoom lens
Zoom Ratio	10x
Horizontal Viewing Angle	5.4 to 50 degrees
Focal Length	F=5.1 to 51mm
Pan Angle	360 degrees endless rotation
Pan Speed	400 degrees/s (max.)
Tilt Angle	210 degrees
Tilt Speed	400 degrees/s (max.)
Power Requirements	AC24V
Power Consumption	80 W max.
Dimensions	9 3/8 x 13 5/8 inches (238 x 346 mm)
Weight of Camera and Housing	Approximately 16 pounds / 7.26 kg
Operating Temperature Range	-40° to +122°F / -40° to +50°C